



# Silpakorn University Sustainability Report 2022-2023













มหาวิทยาลัยศิลปากร



วิทยาลัยศิลปากร  
Silpakorn University



# Table of Contents

President's Statement	4-5
About Silpakorn University	6-7
Silpakorn University and the SDGs	
SDG 1 No Poverty	8-11
SDG 2 Zero Hunger	12-15
SDG 3 Good Health and Well-Being	16-17
SDG 4 Quality Education	18-27
SDG 5 Gender Equality	28-29
SDG 6 Clean Water and Sanitation	30-31
SDG 7 Affordable and Clean Energy	32-35
SDG 8 Decent work and Economic Growth	36-37
SDG 9 Industry, Innovation and Infrastructure	38-41
SDG 10 Reduced Inequalities	42-43
SDG 11 Sustainable Cities and Communities	44-53
SDG 12 Responsible Consumption and Production	54-55
SDG 13 Climate Action	56-57
SDG 14 Life below Water	58-61
SDG 15 Life on Land	62-65
SDG 16 Peace, Justice and Strong Institutions	66-69
SDG 17 Partnerships for the Goals	70-73









# President's Statement



Sustainability is a complex mission, but we recognize its paramount importance for the well-being of our future generations. At Silpakorn University, we hold steadfast to the belief that initiating proactive measures today will yield far-reaching benefits tomorrow.

As the president of Silpakorn University, I would like to acknowledge that we stand at the outset of our sustainability journey, guided by our overarching vision of becoming a leading university in fostering creativity and integrating science and arts for the sustainable development of society. We are wholeheartedly dedicated to the process of learning, implementing, and advancing sustainability in the university and community.

Our journey toward sustainability is ongoing. We have already taken steps toward sustainability. However, we recognize that there is much work to be done. We will continue to set ambitious goals, measure our progress, and adapt to emerging challenges and opportunities. We invite students, faculty, staff, and the wider community to actively participate in or support these sustainability efforts. Together, we shall make resolute progress and work collectively toward a better world.

**Prof. Dr. Tanasait Ngawhirunpat**  
President of Silpakorn University





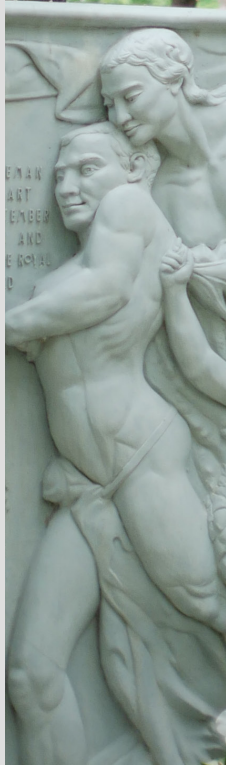
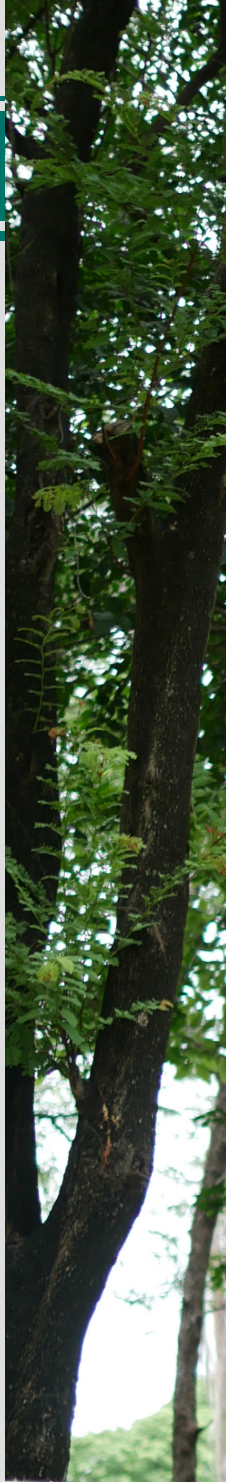
# About Silpakorn University

Silpakorn University was originally established as the School of Fine Arts under the Fine Arts Department in 1933. Initially, the School offered the only study programs in Painting and Sculpture, founded by Professor Silpa Bhirasri, an Italian sculptor (previously known as Professor Corrado Feroci). He was commissioned during the reign of King Rama VI to work in the Fine Arts Department. The School gradually developed and was officially accorded a new status, and it was named Silpakorn University in 1943. While the University originally focused on arts, it has since expanded into various fields.

Today, Silpakorn University offers a wide range of graduate and undergraduate programs, spanning from arts to sciences, with campuses in Bangkok (Wang Tha Phra and Muang Thong Thani Campus), Nakhon Pathom (located in the former residential compound of King Rama VI), and Phetchaburi provinces. Currently, Silpakorn University provides a total of 203 programs offered across 13 faculties and one college.

Silpakorn University, as a leading institution in fostering creativity and integrating science and arts for the sustainable development of society, is committed to the philosophy of “Arts and Sciences create the sustainable nation.” The University aspires to integrate arts, culture, and science to promote a creative and innovative economy that contributes to societal well-being and sustainability. In a world where global challenges, especially environmental and social burdens, affect our way of life and the future of the next generations, Silpakorn University recognizes the need to play a role in addressing these challenges. The University is dedicated to achieving the United Nations Sustainable Development Goals (SDGs) with the aim of ending poverty, protecting the planet, and ensuring peace and prosperity for all.

Silpakorn University launched several sustainability programs and policies, building on its previous efforts. Our Sustainability Report 2022-2023 highlights projects and policies related to the United Nations Sustainable Development Goals. Silpakorn University has been involved to the advancement of these goals in 2022-2023.







“พุ่มนี้ก็สายเลี้ยวแล้ว”

ศาสตราจารย์ ศิลป์ พีระศรี  
ผู้วางรากฐานมหาวิทยาลัยศิลปากร  
ชาติระ ๑๕ กันยายน ๒๔๓๕  
ปรภณะ ๑๔ พฤษภาคม ๒๕๐๕







# No Poverty

End poverty in all its forms everywhere

ขจัดความยากจนทุกรูปแบบ ทุกสถานที่

## Scholarships for Low-Income Students

Silpakorn University has been actively promoting related measures by collaborating with various organizations to develop sustainable solutions, formulate policies, and enforce policies aimed at addressing

poverty in all dimensions. Projects and activities have been implemented to support low-income students' successful education, including the allocation of scholarships.

**Table 1** Scholarship provided to the students in 2022

Faculty	No. of scholarship	Amount (Baht)
Division of Student Affairs	418	4,619,800
Faculty of Painting Sculpture and Graphic Arts	316	1,453,000
Faculty of Architecture	188	4,235,000
Faculty of Archaeology	208	1,293,000
Faculty of Decorative Arts	161	1,263,000
Faculty of Arts	182	1,448,000
Faculty of Education	324	6,711,522.50
Faculty of Science	51	387,000
Faculty of Pharmacy	103	1,333,000
Faculty of Engineering and Industrial Technology	115	826,100
Faculty of Music	157	3,542,000
Faculty of Animal Sciences and Agricultural Technology	18	390,000
Faculty of Management Science	277	3,053,050
Faculty of Information and Communication Technology	129	2,128,000
Silpakorn University International College	2	34,000
<b>Total</b>	<b>2,649</b>	<b>32,716,472.50</b>



A total of 2,649 scholarships, amounting to over 32 million Baht, have been awarded. Additionally, the university has issued announcements to reduce tuition fees for graduate and postgraduate students in the Faculty of Painting Sculpture and Graphic Arts in the academic year 2021 to support all students from all levels. This includes providing 5,000 Baht scholarships to all students who apply for scholarships in the academic year 2022, with 316 scholarships awarded, totaling over 1.45 million Baht. The Faculty of Science has provided research assistant scholarships for low-income postgraduate students with 12 scholarships for master's degree students and 3 scholarships for doctoral students. The Faculty of Pharmacy has offered various types of scholarships, including education promotion scholarships

with 5 scholarships, and need-based scholarships from donations with 28 scholarships. Monthly research assistant scholarships are provided for graduate students in the fields of Doctor of Philosophy in Pharmaceutical Technology and Doctor of Philosophy in Pharmaceutical Sciences and Technology. This support is given throughout the study period, including tuition fee exemptions. The Faculty of Education has granted assistance scholarships with 21 scholarships. Furthermore, numerous faculties have offered scholarships for education promotion. Silpakorn University not only supports domestic students but also extends financial assistance for students from different countries who have low income.





# No Poverty

End poverty in all its forms everywhere

ขจัดความยากจนทุกรูปแบบ ทุกสถานที่

## Entrepreneurship education and support for students

Silpakorn University has developed student entrepreneurs under the name “Entrepreneurs Silpakorn.” This initiative has received support from various funding sources, including Kasikorn Bank, Government Savings Bank, and the National Innovation Agency, part of the Ministry of Higher Education, Science, Research, and Innovation. The aim of this initiative is to promote the development of new innovative startups since the year 2017. Students are encouraged to participate in national-level startup competitions, such as the Startup Thailand League, in which Silpakorn University students have received awards in various categories, including national awards.



Additionally, Silpakorn University has established the University Business Incubator (UBI). The UBI Center supports students and student entrepreneurs who have completed their studies and acts as a mentor for business development during and after their education. Financial support is provided to ensure the sustainability of their businesses. Facilities, such as storage and workspace, are available in Building 4, Administration Building, to establish companies for student entrepreneurs.





**SU-RI-C**  
Supporting University Researchers in Commercialization

**เปิดรับสมัคร  
ผู้สนใจเข้าร่วม**

**บ่มเพาะธุรกิจด้วยเทคโนโลยี  
และนวัตกรรมสู่การเป็นผู้ประกอบการ**

**กลุ่มธุรกิจที่รับสมัคร**

- ธุรกิจสุขภาพและอุปกรณ์ทางการแพทย์
- ธุรกิจเทคโนโลยีดิจิทัล
- ธุรกิจการเกษตรและการแปรรูปทางการเกษตร
- ธุรกิจนวัตกรรมและเครื่องประดับ
- ธุรกิจบริการ
- ธุรกิจพลังงาน

**สมัครเข้าร่วมการบ่มเพาะ:**

1. ผ่านการพิจารณาคัดเลือกกับทางศูนย์บ่มเพาะธุรกิจ มหาวิทยาลัยศิลปากร
2. อบรมการประกอบธุรกิจพัฒนาสู่การเป็นผู้ประกอบการ เช่น 1.Design Thinking 2.การสร้างแผนธุรกิจ
3. รับงบประมาณสนับสนุนการบ่มเพาะธุรกิจ
4. ผ่านการพิจารณาหลักธรรมาภิบาล แมชชีน C- BBI
5. เข้าสู่กระบวนการบ่มเพาะ

**เข้าสู่กระบวนการบ่มเพาะ:**

- หลักการตลาด
- การพัฒนาแผนธุรกิจ
- การเงิน บัญชี ภาษี สำหรับธุรกิจ
- การจัดการองค์กร ผู้จัดการตั้งบริษัท
- การออกแบบผลิตภัณฑ์ บรจด์จุกท์
- การพัฒนาเว็บไซต์
- การจดทะเบียนเครื่องหมายการค้า
- ปรึกษาพบปะผู้เชี่ยวชาญเฉพาะด้าน
- ออกบูธแสดงสินค้าในงานต่างๆ
- การพัฒนาเฉพาะด้านๆ

**สมัครได้ที่**

**คุณสมบัติของผู้เข้าร่วม**

1. ผู้สมัครเป็นสื่อ/นักศึกษาปัจจุบัน หรือสำเร็จการศึกษาไม่เกิน 5 ปี
2. ศึกษาระดับปริญญาตรีศิลปกรรม และผู้ประกอบการไม่เกิน 2 ปี
3. ผลการพิจารณาคัดเลือกของ มหาวิทยาลัยศิลปากร ถือเป็นขั้นสูงสุด
4. ผู้ประกอบการที่ผ่านการคัดเลือกต้องปฏิบัติงานอย่างน้อย 1 ปี ผู้สมัครบ่มเพาะธุรกิจ มหาวิทยาลัยศิลปากรกำหนด อาทิเช่น การเข้าร่วมอบรมหลักสูตรที่ทางศูนย์จัด การเข้าร่วมประชุมระดมสมองกับทีมทรงงาน การจัดทำและนำเสนอรายงานผลการดำเนินงาน การร่วมออกบูธแสดงสินค้าและการสร้าง
5. ส่งแบบฟอร์มใบรับสมัครได้ที่ ศูนย์บ่มเพาะธุรกิจ สำนักงานอธิการบดี นวัตกรรมและการสร้างสรรค์ มหาวิทยาลัยศิลปากร

**สอบถามข้อมูลเพิ่มเติมได้ที่**  
ศูนย์บ่มเพาะธุรกิจ สำนักงานบริหารการวิจัย นวัตกรรมและการสร้างสรรค์ มหาวิทยาลัยศิลปากร  
โทร.092-431-0868 (การติดต่อนวัตกรรม) E-mail. Silpakorn.ubi@gmail.com  
Facebook : Entrepreneurs Silpakorn

Moreover, the university has an Intellectual Property Office under the project “Promoting Intellectual Property Management and Technology Transfer in Higher Education Institutions” to support student entrepreneurs and university staff

who need to register their businesses, copyrights, patents, and intellectual property rights. These initiatives are aimed at fostering entrepreneurship and innovation within the university community.





# Zero Hunger

End hunger, achieve food security and improved nutrition and promote sustainable agriculture

ขจัดความหิวโหย บรรลุความมั่นคงทางอาหาร ส่งเสริมเกษตรกรรมอย่างยั่งยืน

## Procuring Nutritious Food at Reasonable Prices

Silpakorn University has cafeterias and shops that cater to the needs of students and university staff. A variety of food establishments, including Halal restaurants, health-friendly dining options, vegetarian restaurants, and vegan food, are available at reasonable prices. These options are environmentally friendly and promote sustainability within the university.





Furthermore, Silpakorn University has launched projects and activities that offer food discount vouchers for students. The university's commitment to supporting local farmers, businesses, and food producers is also evident. Silpakorn University recognizes the importance of supporting local food providers, aiming to address food insecurity issues and ensuring that everyone has access to food. To this end, the university has initiated the 'Greenery Market' project, which provides opportunities for local farmers, entrepreneurs, and food producers to sell their products on university premises at fair prices. This initiative aims to address food insecurity challenges both within and around the university.







# Zero Hunger

End hunger, achieve food security and improved nutrition and promote sustainable agriculture

ขจัดความหิวโหย บรรลุความมั่นคงทางอาหาร ส่งเสริมเกษตรกรรมอย่างยั่งยืน

## Promoting Food Knowledge and Safety

Silpakorn University offers several courses to support knowledge and safety in food-related areas. These courses include:

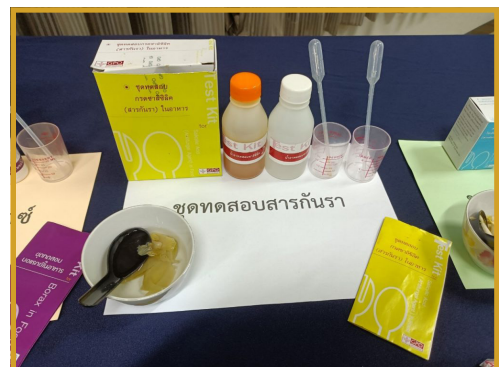
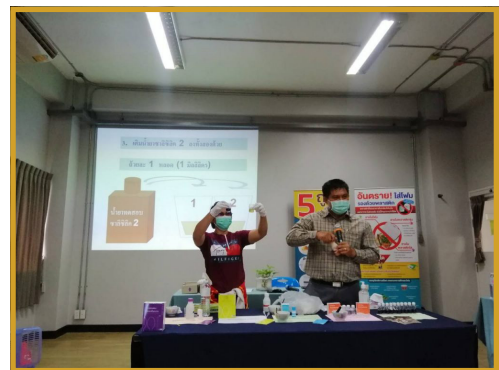
**Course 459234 - Nutrition :** Taught in the 2nd semester, this course emphasizes the importance of nutrition for health and society.

**Course 084101 - Food for Health :** Taught in every academic term, this course covers fundamental knowledge about the body's nutritional requirements, nutritional issues, diseases related to nutrition, food safety, and consumer protection.

**Course 459166 - Nutrition for Health :** Taught in the 1st semester, this course imparts knowledge about the importance of nutrition for health and society.

These courses are designed to enhance food safety and nutrition knowledge among students.

In addition, Silpakorn University has organized practical training sessions for farmers, entrepreneurs, and food producers. These sessions are focused on public health, promoting clean and safe food, and achieving certification. They address key regulations related to food operators and food handlers, as per the Ministry of Public Health's guidelines on the characteristics of food retail establishments (2018). For more information, please visit : <https://dsa.su.ac.th/ksu/?p=13490>





### Promoting Agricultural Knowledge and Safe Value-Added products

Silpakorn University has contributed to the advancement of practical training programs aimed at enhancing the capabilities of local farmers and agricultural science students using science and technology. This initiative is based at the Agricultural Innovation Center. It is located in the Pa Yuab Subdistrict, Wang Chan District, Rayong Province. The project has been in operation since the year 2018 and has received substantial collaboration from various organizations. Its mission is to promote the center as a hub for learning and developing agricultural knowledge related to modern agriculture. This knowledge is shared with students, farmers, and individuals interested in agriculture.

In this regard, Silpakorn University has been actively involved in providing knowledge and practical training related to agricultural product processing, utilizing science and technology to the target group of local farmers and students of agricultural science courses. This initiative aims to enhance the capabilities of farmers and students and create income opportunities for local food producers. It also imparts knowledge on various aspects of food processing and value addition, contributing to job creation within the local community. The training and practical sessions involve the transfer of technology related to the use of solar energy-based paraboloid solar dryers in banana flour processing to the target group, including agricultural science students and those involved in the agricultural sector.







# Good Health and Well-Being

Ensure healthy lives and promote well-being for all at all ages

รับรองการมีสุขภาพและความเป็นอยู่ที่ดีของทุกคนในทุกช่วงอายุ

The university has collaborated with health agencies to promote health and well-being, support research, and develop vaccines and medicines for both communicable and non-communicable diseases that directly affect developing countries. This effort aims to ensure access to essential medicines and vaccines at affordable prices. There are community-based initiatives to enhance and promote better health and well-being.

## Promoting community health for an improved well-being

The Faculty of Pharmacy, Silpakorn University, in collaboration with the student affairs unit, promotes student learning, welfare, and alumni relations by utilizing the local community as a foundation. The primary objective is to encourage students to apply their academic knowledge for the benefit of others and society while fostering a sense of social responsibility and community. Students are organized into groups, with each group taking responsibility for one family's well-being and providing continuous support. At present, there are a total of 76 groups spread across three areas, including Phrong Madaeu Sub-District, Wang Taku Sub-District, and Na Srang Sub-District. During each semester, each group undertakes two community visits as part of their student activities. The first visit aims to understand the family's background, assess their expectations and needs, and

design activities to enhance happiness. The second visit involves implementing the designed activities. This initiative aims to educate students on community care, lifestyle understanding, linking health issues to living conditions, and applying health knowledge to identify, plan, and address community problems.





### The “Warm Community Medical Clinic”, Silpakorn University

The “Warm Community Medical Clinic” is open and provides services to the students, staffs and local communities. It is located on Songpol Road in front of the university. The clinic provides medical examinations and consultations with doctors and pharmacists and refers patients to hospitals when necessary. The “Warm Community Medical Clinic” operates from Monday to Friday, between 08:30 AM and 04:30 PM (excluding public holidays) and has been in operation since November 5, 2013.







# Quality Education

Ensure inclusive and equitable quality education and promote lifelong learning opportunities for all

รับรองการศึกษาที่เท่าเทียมและทั่วถึง ส่งเสริมการเรียนรู้ตลอดชีวิตแก่ทุกคน

In the academic year 2022, Silpakorn University had a total of 27,937 students, including undergraduate, master's, and doctoral degree students. Additionally, there were 514 undergraduate students who had completed their studies and met the qualifications for teaching in primary education.

## Programs/courses related to sustainability

Silpakorn University has offered several courses related to sustainability to students. Some courses are opened as online courses for life-long learning. Total number of courses with sustainability embedded for courses running in 2022-2023 is more than 30 courses as follows.

Course name	Note
Architecture and Environment	Influence of the natural environment on architectural design and human comfort zone; implications for design of buildings to effectively control environment, conserve energy and harvest energy from natural sources.
Individual study in landscape architecture	Role, importance, and purpose of urban planning; planning process and methods; implementation of plans; study of land use, traffic, transportation, infrastructure, and environment in order to understand how the urban system works. Includes study visits.
Environmental ecology	Nature and scope of ecology. Physical environment. Ecology of individuals. Population ecology. Ecological interactions. Communities and major ecosystems. Regional ecology and biomes. Current ecological issues. Global Climate Change. Applications of ecology to environmental problems and development projects.
Solid waste treatment technology	Solid waste properties. Reuse strategies. Material recovery facility. Recycling. Composting. Anaerobic digestion. Landfill mining. Refuse derived fuel. Pyrolysis and Gasification of solid waste. Field trips included



Course name	Note
Water pollution and controls	Sources, causes and impacts of water pollution. Principles and concepts for prevention and control of water pollution. Water quality monitoring. Water quality modeling and prediction for water pollution control. Examples of cleaner technology and wastewater utilization applications for wastewater reduce. Basic design and system selection. Operation control and maintenance of collection and wastewater treatment systems. Physical, chemical and biological treatments and disposal of wastewater. Sludge treatment and disposal. Ethics and laws related to water pollution control.
Cleaner technology and environmental management	Material and energy balance. Concepts of cleaner technology. Applications and auditing of cleaner technology. Current standards of environmental management system. Environmental laws and regulations. Case studies.
Health risk and impact assessment	Laws related to health risk. Relationship with environmental impact assessment process. Epidemiology. Development projects in risk groups. Forms of toxic substances from developed projects. Health risk and impact assessment and management. Related models.
Environment and environmental management	Environmental components. Problematic environmental issues. Water, air and soil pollution. Natural resources and sustainable development. Roles of public participation. Environmental standards, laws and regulations. Factors involved in decision making. National environmental policy and plan. Environmental related agencies. Environmental management in various projects. Environmental ethics.





# Quality Education

Ensure inclusive and equitable quality education and promote lifelong learning opportunities for all

รับรองการศึกษาที่เท่าเทียมและทั่วถึง ส่งเสริมการเรียนรู้ตลอดชีวิตแก่ทุกคน

Course name	Note
Air pollution and control	Air pollution management and control laws. Principles and methods of air pollution prevention, clean technology for air pollution reduction and their applications in industries. Air pollution sampling and measurement. Design and maintenance of ventilation and air pollution treatment systems. Applications of mathematical models for air pollution management and control. Case studies.
Organic waste recycling	Characteristics of organic waste. Composting. Biogas production. Algal and fish production. Aquatic weeds and their utilization. Control considerations in organic waste utilization.
Geo-informatics for environmental management	Principles of geo-informatics. Storage, management and retrieval of geospatial data using geo-informatics. Spatial and geo-statistical analysis of geospatial data. Applications of geo-informatics technology in environmental and natural resource management and monitoring. Case Studies.
Selected topics in environmental science management	Topics of interest in environmental science management.
Natural environmental and art work conservation	Basic knowledge of environment and natural resources; environmental problems; impact of physical, chemical and biological threats on art works; ecosystem services and eco-tourism; basic principle of natural and cultural environmental conservation; application of scientific knowledge to conservation of natural environment and art works; world heritage.
Environment, pollution and energy	Ecosystem; water pollution; air pollution; soil pollution; solid waste; energy and its impact on global climate.



Course name	Note
Innovation for energy and environment	Importance of energy and environment, impact of energy usage on the environment, global warming, energy saving, examples of alternative energy innovation, environmental quality standards.
Waste and environmental management in livestock farm	Waste, air and water pollution in livestock farm. Effects from waste and pollution on livestock animal and environment. Regulations and laws on environmental protection. Waste management technology using physical, biological and chemical processes. Waste utilization in agriculture for energy production. Field trips required.
Modern times fisheries	Importance and current situations of fisheries and aquaculture production; aquatic species of economic importance; coastal and offshore fisheries; laws and regulations related to fisheries and aquaculture; illegal, unreported and unregulated fishing (IUU); international fisheries laws; blue economy; optimal environmental conditions for aquaculture; farm standards; fishing gears; climate change and fisheries.
Aquatic resource conservation and management	Degradation of aquatic resources and environment. Marine and coastal pollutions. Status of fishery resources. Aquatic animals listed as endangered species. Fishing and fishing gears. Wetland. Conservation and management of inland and coastal resources. Environmental impact assessment in fisheries. Institutions and organizations in conservation of resources and environment. Laws and regulations pertaining to fisheries and aquatic resources.





# Quality Education

Ensure inclusive and equitable quality education and promote lifelong learning opportunities for all

รับรองการศึกษาที่เท่าเทียมและทั่วถึง ส่งเสริมการเรียนรู้ตลอดชีวิตแก่ทุกคน

Course name	Note
Sustainable farm business management	Concepts in sustainable farm management; application of principles in economic and management for farm business; analysis and plan of farm business; evaluation of success in farm operations; financial management of farm business; farm business management under risk and uncertainty; social and environmental responsibility of businesses.
Bioscience for agricultural and environmental sustainability	Sufficiency economy philosophy, and local wisdom in sustainable farming models, good agricultural practices, organic farming, green production, smart farming, zero waste agricultural practices, integrated agricultural farming system, agricultural product processing and marketing, relationship and impact of farming on the natural resources and environment, and knowledge transferring techniques.
Integrative research in bioscience for sustainable agriculture	Analysis of the situation and agriculture problems from the farmers, agricultural operation agencies or agricultural entrepreneurs, concepts and impacts of integrative research to agriculture, environment, and health, presenting research guidelines for solving agricultural problems by applying the knowledge of bioscience or with other academic fields appropriately.
Soil fertility and protection for sustainable agriculture	Nutrient recycling in soil, soil fertility analysis, plant-soil-microbe interaction, methods of enhancing soil fertility for crop production, and soil protection method and application for sustainable agriculture.
Food safety standard and international policy	Physical, chemical and biological hazards in food processing and production, standard and good manufacturing practices in food safety, hazard analysis and critical control point, maximum residue limiting value related to food safety, and international food safety policy.

Course name	Note
Maritime zones and marine and coastal resource management	Maritime zones and coasts; geology and geomorphology of Thai seas; marine and coastal deposition and sedimentation; Thai coastal landscapes; living and non-living marine and coastal resources; settlement of people in coastal zones; public health system of coastal community; stability, prosperity, sustainability and economic benefits of Thai seas; coastal management of Thai seas.
Fundamental aquatic environment management	Impacts of human activities on population structure of aquatic animals and environment; sediment and water quality management; fishery resource management; issue-based management principle.
Renewable energy technology	Meaning of renewable energy; converting renewable energy to thermal and electrical energy; solar, wind, hydro, and biomass energy; case studies of renewable energy resources; selection and management of renewable energy.
Sustainable Technology	Definition and importance of sustainable technology; effects of technology on economy, society, and environment; examples of sustainable technology; creative and sustainable product design.
Household Environmental Management	Natural lighting for household energy conservation; water conservation garden; indoor water conservation; passive air ventilation; solid waste separation; solid waste composting; household hazardous waste management.
Environment, Pollution And Energy	Ecosystem; water pollution; air pollution; soil pollution; solid waste; energy and its impact on global climate.





# Quality Education

Ensure inclusive and equitable quality education and promote lifelong learning opportunities for all

รับรองการศึกษาที่เท่าเทียมและทั่วถึง ส่งเสริมการเรียนรู้ตลอดชีวิตแก่ทุกคน

## “SU4Life” Credit Bank System - Silpakorn University

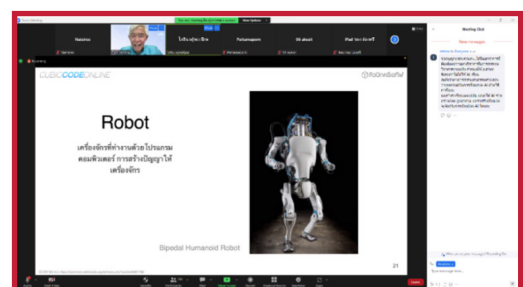
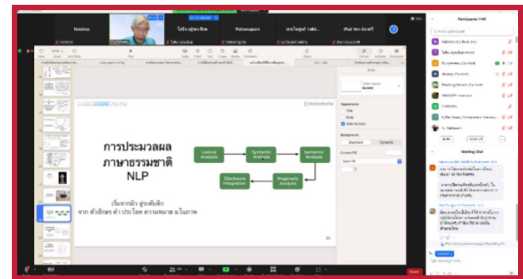
Silpakorn University operates the “SU4Life” credit bank system, which provides educational opportunities for the general public who are interested in enhancing their knowledge and experiences. Individuals can enroll in individual courses, subject sets, short courses, training programs, or degree programs by accumulating credits in Silpakorn University’s credit bank. This opportunity is available for

a lifetime, and participants can choose from a wide range of courses at all levels and across all disciplines offered by the university. There are no restrictions based on gender, age, occupation, disability, religion, or ethnicity, aiming to provide equal educational opportunities. For more information, please visit : <https://lifelong.su.ac.th/>. The short courses offered through the SU4Life system in the format of video online streaming are as follows:

No.	Course
1	Drink and Arts
2	ศิลปะกับฮวงจุ้ย (Art and Feng Shui)
3	สุนทรียศาสตร์และการจัดดอกไม้ญี่ปุ่นโดยดอกไม้มงคลไทย (Japanese Ikebana and Thai Auspicious Flowers)
4	แรงบันดาลใจไทย (Rang Bundan Thai)
5	สีไทยโทน (Thai Tone Colors)
6	ภูมิปัญญาช่างกับระบบโครงสร้างไม้โบราณ (Traditional Craftsmanship and Ancient Wood Structures)
7	Voxel Modeling
8	การประยุกต์ใช้การแสดงเพื่อนำเสนอภาพลักษณ์บุคคล (Applied Social Representation for Personal Image Presentation)
9	ความรู้ในการใช้ยาเบื้องต้น (Basic Knowledge of Medications)
10	พระพุทธรูปในประเทศไทย (Buddha Images in Thailand)
11	ตั้งตำรับเครื่องสำอางได้...ง่ายนิดเดียว (Create Your Cosmetics Recipe... Super Easy)
12	บทความวิจัยใน 60 นาที (Research Articles in 60 Minutes)

## Online Training Program “AI Changing Lifestyles and Transforming Education”

The Innovation and Academic Affairs Division of Silpakorn University organized an online training program titled “AI Changing Lifestyles and Transforming Education” on May 31, 2023. This program was conducted online via the Zoom platform. The objective of the training was to provide participants with knowledge, understanding, and insights into AI technology to be applied in future education. The audience included staff from the Digital Technology Office, staff from Silpakorn University, and personnel from other organizations, as well as external individuals interested in the topic. A total of 216 participants took part in this training program.







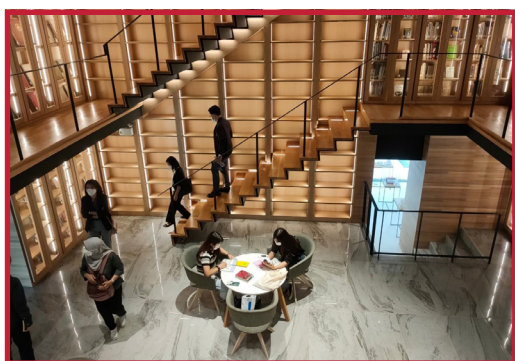
# Quality Education

Ensure inclusive and equitable quality education and promote lifelong learning opportunities for all

รับรองการศึกษาที่เท่าเทียมและทั่วถึง ส่งเสริมการเรียนรู้ตลอดชีวิตแก่ทุกคน

## Promoting Equal Education Opportunities and Inclusivity

Quality education is a fundamental right that should be accessible to everyone. Recognizing the importance of providing quality education for individuals with disabilities, Silpakorn University has implemented a policy and guidelines for admitting students with disabilities for the academic year 2023. The aim of this policy is to promote and support the distribution of educational opportunities and create equality in education for people with disabilities. Detailed information about the policy and admission guidelines can be found here : [https://lawapp.su.ac.th/uploads/3-ST66-6-9\\_2306090856.pdf](https://lawapp.su.ac.th/uploads/3-ST66-6-9_2306090856.pdf)

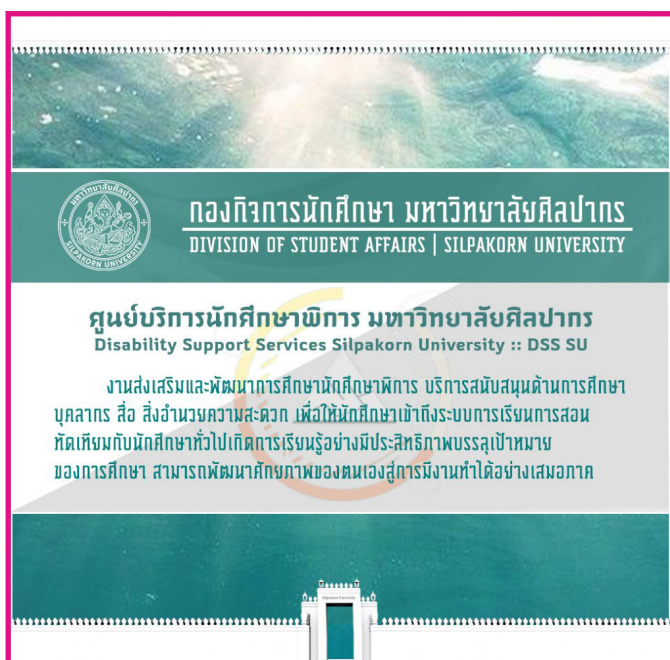


Currently, Silpakorn University has issued a regulation regarding library access for various groups, including faculty, students, school students, retirees, adjunct professors, students in the credit unit system, spouses, children of university staff, former students, students, and individuals from other educational institutions. These groups have the opportunity to access educational resources and materials from the university's libraries. This includes printed materials, non-printed materials, periodicals, audiovisual materials, and electronic resources. For those who do not study at Silpakorn University, the University's Library Services offer the following resources and equipment: Computer equipment: The libraries have a total of 125 computer workstations available for public use.

- Open Access databases developed by the Central Library.
- Online databases resulting from memorandums of understanding (MOUs) between libraries.
- Other available databases

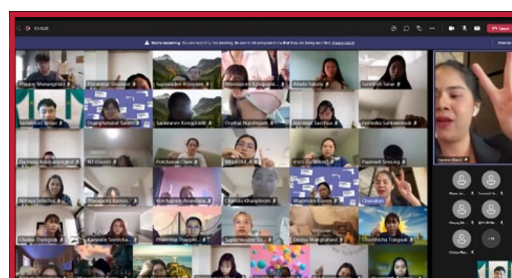
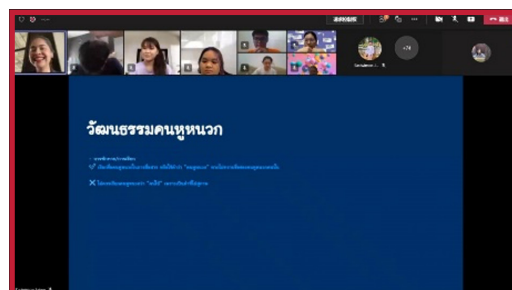
## Student Disability Services at Silpakorn University

Students with disabilities who receive support and education through appropriate media and assistive devices should have equal access to learning resources. They should be able to learn and develop their abilities to their full potential. Supporting and developing the education of students with disabilities is managed by the Student Disability Services Center (DSS SU) at Silpakorn University. DSS SU is responsible for providing support, promoting, and building networks to care for students with disabilities and scholarship recipients.



## “Sign Language... the Language of Love” Project

The Student Disability Services Center (DSS SU) recognizes the importance of living together happily and aims to organize the basic sign language training project, “Sign Language... the Language of Love.” The project’s goal is to train Silpakorn University students in basic sign language, enabling them to use this knowledge for valuable professional development while studying. You can find more information about the project at this link: <https://shorturl.asia/5sc1R>







# Gender Equality

Achieve gender equality and empower all women and girls

บรรลุความเท่าเทียมทางเพศ พัฒนาบทบาทสตรีและเด็กผู้หญิง


Silpakorn University is aware of the importance of gender equality. As a result, the university has issued a statement regarding the Dress Code and students' right to express their gender identity. This statement demonstrates the university's commitment to ensuring gender equality and the freedom to express one's human rights without discrimination. It reflects Silpakorn University's adherence to the principles of treating all individuals equally, respecting their right to gender expression without bias or discrimination, and forming an integral part of human rights and the university's operating principles.

## Freedom to Dress According to Gender Identity

Students are allowed to dress according to their gender identity or gender expression, as stated in Silpakorn University's announcement regarding the Dress Code Guidelines for Students based on their gender identity, gender expression, or gender identity not aligned with their assigned gender at birth. This policy is in place to support gender diversity.



In addition, Silpakorn University has announced its commitment to preventing and addressing issues related to gender-based harassment or sexual harassment in the workplace. This commitment aims to promote equality among individuals and create an organization that is free from gender-based harassment or sexual harassment in its operations. This is achieved through respectful and collaborative practices, raising awareness about the issues of gender-based harassment, enhancing knowledge and understanding, establishing preventive measures, and addressing issues promptly. Moreover, the university focuses on creating an environment and implementing various measures to minimize the risk. : [http://sustainability.su.ac.th/?page\\_id=716](http://sustainability.su.ac.th/?page_id=716)



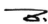
**ประกาศมหาวิทยาลัยศิลปากร**  
**เรื่อง เจตนารมณ์การป้องกันและแก้ไขปัญหาการล่วงละเมิดหรือคุกคามทางเพศในการทำงาน**

คณะผู้บริหาร ข้าราชการ ลูกจ้าง พนักงาน และบุคลากรทุกคนของมหาวิทยาลัยศิลปากร มีเจตนารมณ์ร่วมกันที่จะส่งเสริมความเท่าเทียมกันระหว่างบุคคล และสร้างองค์กรที่ปราศจากการล่วงละเมิดหรือคุกคามทางเพศในการทำงานด้วยการปฏิบัติต่อกันอย่างให้เกียรติและเคารพซึ่งกันและกันและไม่กระทำการใดที่เป็นการล่วงละเมิดหรือคุกคามทางเพศต่อผู้บังคับบัญชา ผู้ใต้บังคับบัญชา เพื่อนร่วมงาน นักศึกษา และบุคคลที่เกี่ยวข้องในการติดต่อประสานงานหรือดำเนินการร่วมกับมหาวิทยาลัยศิลปากร

ดังนั้น อธิการบดีมหาวิทยาลัยศิลปากรโดยมติที่ประชุมคณะกรรมการบริหารมหาวิทยาลัยศิลปากร ในการประชุมครั้งที่ 20/2563 เมื่อวันที่ 3 พฤศจิกายน พ.ศ. 2563 จึงให้ประกาศเจตนารมณ์การป้องกันและแก้ไขปัญหาการล่วงละเมิดหรือคุกคามทางเพศในการทำงาน โดยมหาวิทยาลัยศิลปากรจะดำเนินการ ดังนี้

1. บริหารงานและปฏิบัติงานบนหลักแห่งความเสมอภาค ให้เกียรติซึ่งกันและกัน เคารพในศักดิ์ศรีความเป็นมนุษย์โดยคำนึงถึงความเท่าเทียมระหว่างเพศ ไม่กระทำการอันเป็นการเลือกปฏิบัติโดยไม่เป็นธรรมต่อบุคคลด้วยเหตุความแตกต่างในเรื่องของเพศ และไม่กระทำการใดที่เป็นการล่วงละเมิดหรือคุกคามทางเพศในการทำงาน
2. สร้างวัฒนธรรมองค์กร และปลูกฝังค่านิยมให้แก่คณะผู้บริหาร ข้าราชการ ลูกจ้าง พนักงาน และบุคลากรทุกคนของมหาวิทยาลัยศิลปากรให้ปฏิบัติต่อกันโดยให้เกียรติซึ่งกันและกันและเคารพในศักดิ์ศรีความเป็นมนุษย์
3. สร้างสภาพแวดล้อมและบรรยากาศที่ดีภายในองค์กร และส่งเสริมความปลอดภัยไม่ให้เกิดการล่วงละเมิดหรือคุกคามทางเพศในการทำงานให้แก่คณะผู้บริหาร ข้าราชการ ลูกจ้าง พนักงาน และบุคลากรทุกคน และบุคคลที่เกี่ยวข้องหรือดำเนินการร่วมกับมหาวิทยาลัยศิลปากร
4. สร้างกลไกและกระบวนการในการป้องกันและแก้ไขปัญหาการล่วงละเมิดหรือคุกคามทางเพศในการทำงานเพื่อไม่ให้เกิดการล่วงละเมิดหรือคุกคามทางเพศในการทำงาน โดยให้ถือตามแนวปฏิบัติเพื่อป้องกันและแก้ไขปัญหาการล่วงละเมิดหรือคุกคามทางเพศในการทำงาน แบบท้ายประกาศนี้

ประกาศ ณ วันที่ 16 พฤศจิกายน พ.ศ. 2563



(ผู้ช่วยศาสตราจารย์ชัยชาญ ฉางระเวช)  
อธิการบดีมหาวิทยาลัยศิลปากร





# Clean Water and Sanitation

Ensure availability and sustainable management of water and sanitation for all

รับรองการมีน้ำใช้ การจัดการน้ำและสุขาภิบาลที่ยั่งยืน

## Water Management and Usage

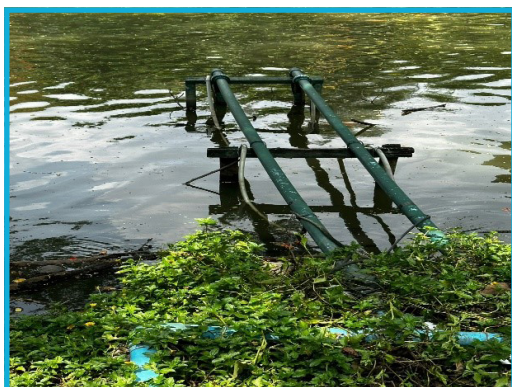
Silpakorn University, Sanam Chan Palace Campus, manages water and water usage by having wastewater holding ponds to prevent natural water contamination and wastewater treatment ponds using an Aerated Lagoon (AL) system and a floating scum system to increase the oxygen content in the water. This promotes the efficient decomposition of organic substances within the pond, ensuring that treated wastewater meets environmental standards as specified by the Ministry of Natural Resources and Environment.



Silpakorn University, Phetchaburi Campus, sources raw water from the Nong Chik Reservoir for tap water production. The water is pumped up and treated through filtration and disinfection systems, with a current production capacity of approximately 600 cubic meters per day, capable of meeting the population's needs at the campus. Additionally, the university has coordinated with the Department of Groundwater Resources to drill and install 5 additional wells as a water reserve in case of a water shortage in the Nong Chik Reservoir. The campus has a natural wastewater treatment system that includes an open drainage system that collects wastewater from buildings and directs it to three large wastewater treatment ponds. The water is treated naturally with sunlight and air. It overflows from pond 1 to pond 2 and then to pond 3 before being discharged into the Nong Chik Reservoir.



The university also emphasizes water resource conservation by planting drought-resistant plants like eucalyptus and golden shower trees to water the trees and lawns within the university. Water is drawn from the water pond for these purposes. Moreover, there is an ongoing campaign for water conservation practices within various university departments.



### Access to Free Drinking Water

Silpakorn University provides clean drinking water free of charge to students, staff, and the general public. Water dispensers are installed in various academic and administrative buildings within the university, making clean drinking water easily accessible. The university manages water quality under the “Silpakorn University Drinking Water Production Project.” The water goes through a process of reverse osmosis (RO) filtration and is disinfected with ultraviolet (UV) light. Water quality is regularly tested using scientific equipment from the university’s Science Equipment Center, which is responsible for water quality analysis. This initiative aims to ensure that everyone within the university community, including staff and students, has access to clean, safe, and high-quality drinking water.







# Affordable and Clean Energy

Ensure access to affordable, reliable, sustainable and modern energy for all

รองรับการมีพลังงานที่ทุกคนเข้าถึงได้ เชื่อถือได้ ยั่งยืนทันสมัย

## Promotion of Alternative Energy Use

Silpakorn University has a policy to increase the proportion of renewable energy while reducing the use of high-carbon energy sources. In line with this policy, the university has developed an Electric Vehicle (EV) Shuttle Bus service for the convenient and eco-friendly transportation of students and staff within the university campus. This initiative aims to create awareness about using public transportation to continually reduce traffic congestion and road accidents. Additionally, the university has installed solar rooftops to generate electricity from solar cells for electric vehicles in the unit. This transition towards sustainable and eco-friendly energy usage is part of the university's ongoing energy conservation project.



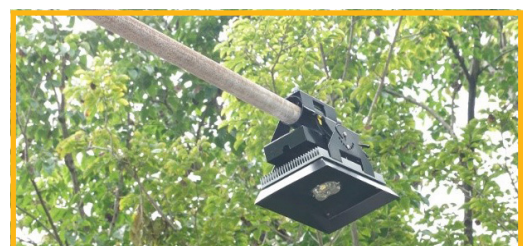
Within Silpakorn University, Sanam Chandra Palace Campus consumes a significant amount of electricity. Therefore, the university is striving to become a model of a Green Campus by surveying the rooftop areas suitable for installing solar panels on 15 buildings. There is a policy in place to inspect and upgrade existing buildings and construct new ones to meet energy sufficiency standards.



Furthermore, the university has developed an energy-saving plan aimed at reducing overall energy consumption. Measures to save energy include optimizing air conditioning and lighting systems and adopting alternative energy sources to reduce energy costs. Notable projects promoting clean energy usage include:

- The purchase of three 23-seat electric rail cars with financial support from Kasikorn Bank.
- Installation of solar rooftops in the parking area at Phra Ratchawang Sanam Chandra Palace campus.
- The project to upgrade the campus's internal power and communication systems for electricity distribution.

These initiatives aim to increase the adoption of clean energy and create a more sustainable energy consumption model within Silpakorn University.







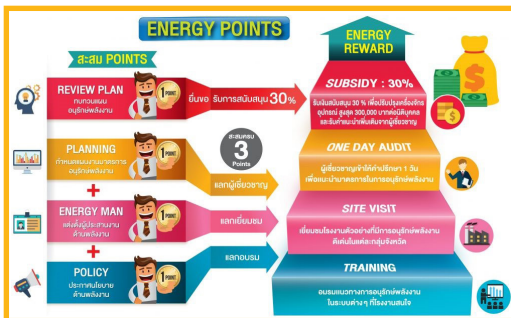
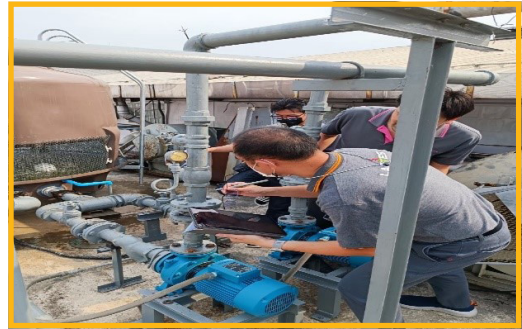
# Affordable and Clean Energy

Ensure access to affordable, reliable, sustainable and modern energy for all

รองรับการมีพลังงานที่ทุกคนเข้าถึงได้ เชื่อถือได้ ยั่งยืนทันสมัย

## Energy Points” - Project Supporting Energy Conservation and Cost Reduction in Small and Medium-Sized Industries

The university directly provides services to various industries within the region to enhance energy efficiency and promote the use of clean energy. The “Energy Points” project, a collaborative effort between the Faculty of Engineering and Industrial Technology is aimed at supporting energy conservation and cost reduction in small and medium-sized industrial enterprises. It involves experts in energy conservation forming a network across 18 provincial groups, each focusing on specific regions.



Furthermore, Silpakorn University, Phetchaburi IT Campus, and the Faculty of Pharmacy have participated in the Green Office project in 2023 to engage all staff members in raising awareness about the importance of resources and energy. They have established resource and energy conservation measures, which can be found at link : <http://www.pitc.su.ac.th/index.php/organization-3/green-office-5>

### Choi Journey with the Energy Policy Committee: Public Awareness Program on Electricity

The Academic Services Office of Silpakorn University organized the “Choi Journey with the Energy Policy Committee: Public Awareness Program on Choi Journey” on May 23, 2023. This program aimed to promote knowledge, awareness, and community engagement in the field of electricity. The project was held at the Auditorium on the 5th floor of the Bangkok Art and Culture Center (BACC), and received financial support from the Electricity Development Fund, the Energy Policy Committee, or EPC Office, to carry out activities pursuant to the fiscal year 2022 budget under Section 97(5). The program was conducted from December 27, 2022, to October 26, 2023.







# Decent Work and Economic Growth

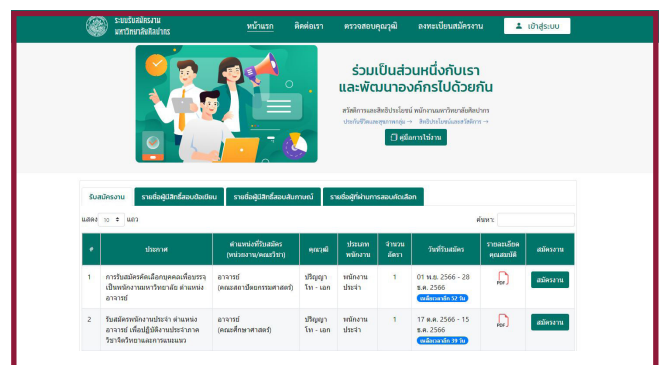
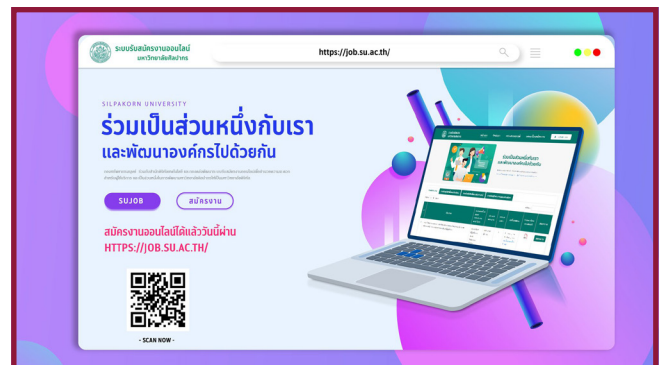
Promote sustained, inclusive and sustainable economic growth, full and productive employment and decent work for all

ส่งเสริมการเติบโตทางเศรษฐกิจที่ต่อเนื่องครอบคลุมและยั่งยืน การจ้างงานที่มีคุณค่า

Silpakorn University employs a total of 2,903 staff members. The university manages its personnel affairs in accordance with the principles of fairness, equality, and non-discrimination. Salaries are paid to employees in compliance with labor laws, and salary adjustments are made periodically based on the individual's capabilities and qualifications, in a fair manner, in accordance with the standards and principles of ethical work practices and service delivery at Silpakorn University. :[https://lawapp.su.ac.th/uploads/3-OT64-4-23-9\\_2104250208.pdf](https://lawapp.su.ac.th/uploads/3-OT64-4-23-9_2104250208.pdf)

## Job Application System

Silpakorn University uses the “Silpakorn University Job Application System” to facilitate open job applications for the general public. This system allows individuals who are interested in applying for jobs to meet their career aspirations and needs. The system can be accessed and used easily through the website <https://job.su.ac.th/>. Interested individuals can search for jobs that align with their skills and interests.



## Silpakorn University organizes “Job Fairs” to promote job searching and economic development.

The university supports and encourages departments and faculties to conduct “Job Fairs” to prepare students who are nearing graduation. These events focus on enhancing students’ readiness in terms of academic knowledge, life experiences, and appropriate self-presentation. These activities include career guidance and networking opportunities with organizations to prepare students for their future careers. Furthermore, there are lectures on important topics related to career preparation, such as key skills for modern graduates, creating a resume that appeals to HR, tax preparation, job application readiness, interview preparation, life pathways, and essential workplace skills.







# Industry, Innovation and Infrastructure

Build resilient infrastructure, promote inclusive and sustainable industrialization and foster innovation

พัฒนาโครงสร้างพื้นฐานที่พร้อมรับการเปลี่ยนแปลง ส่งเสริมการปรับตัวให้เป็นอุตสาหกรรมอย่างยั่งยืนและทั่วถึง และสนับสนุนนวัตกรรม

Silpakorn University supports its staff in creating research, innovations, and creative works that have a positive impact on society, the economy, and the environment. This includes the development of new innovations aimed at improving the quality of life for the public and driving the economic growth of the nation.

## Intellectual Property and Licensing of Innovative Works

In the year 2022, Silpakorn University achieved significant results in innovative research with commercial potential. In terms of intellectual property, the university has filed a total of 154 patents, including both patents and design patents.

## Entrepreneurship and Ecosystem at Silpakorn University

Silpakorn University is committed to becoming a leading creative institution with a focus on delivering creativity and innovation. The university's mission aligns with the United Nations' Sustainable Development Goals (SDGs) and aims to address local challenges on a national scale through innovation. To fulfill this mission, Silpakorn University established SU Innovation (SU-Inno) in 2020, an interdisciplinary platform supporting research in humanities, social sciences, science and technology, engineering, arts, and education. Located at the Sanam Chandra Palace campus, SU-Inno provides an ecosystem where young entrepreneurs can collaborate, innovate, and exchange ideas with the university's staff, students, and the public sector.



SU-Inno offers “The Connector,” a co-working space, and a maker workshop equipped with laser-cutting machines and 3D printers for prototype fabrication. It promotes initiatives like “Inspiring SU Entrepreneurs,” “SU Open Innovation Workshops,” and “Hackathons” to inspire student participation, with support from SU Entrepreneurs staff and business incubation teams, including intellectual property experts.

In 2022, several programs were introduced, including capacity-building and inspiring events such as “Inspiration Meet with Young Entrepreneurs,” “Entrepreneurial Inspiration by Influencers,” and “Industry Partnership Pitching.” Collaborating with the National Innovation Agency (NIA) and the Government Savings Bank (GSB), the university supported youth ideas and innovations, offering training and competitions at both local and national levels, focusing on design thinking, the Startup Thailand League, and innovative projects like “Business Models from Wastes” (YOLO recycled cloth hangers).







# Industry, Innovation and Infrastructure

Build resilient infrastructure, promote inclusive and sustainable industrialization and foster innovation

พัฒนาโครงสร้างพื้นฐานที่พร้อมรับการเปลี่ยนแปลง ส่งเสริมการปรับตัวให้เป็นอุตสาหกรรมอย่างยั่งยืนและทั่วถึง และสนับสนุนนวัตกรรม

## Silpakorn Innovations Contribution toward Sustainable Society

Silpakorn University is actively promoting industrial partnerships and providing an entrepreneurial ecosystem for students. The university focuses on knowledge transfer workshops for the local community, fostering sustainability. In 2020, SU Entrepreneurs and Smart Bio Plastics Co., Ltd. organized a workshop on compostable mushroom bags, minimizing microplastic pollution. Smart Bio Plastics produces biodegradable products, including mushroom grow bags, rice straws, and eco-products. In 2022, an idea pitching event on “Low-carbon Society” was organized for high school and college

students, broadcasted on SU Entrepreneurs’ Facebook page. SU Entrepreneurs also supported an exhibition showcasing sustainability products from SBP and LA MITA, featuring bioplastics and recycled leather designed in collaboration with the northern Thai tribe. The university annually hosts the “Open Innovation Camp,” addressing real-world challenges. In 2022, the camp focused on waste management in a fragile tourist area in Samut Prakarn. To wrap up the year, SBP Co. Ltd., an innovative company incubated at the university, won the GSB Change Maker 2022 award.

**ขอเชิญชวนนักเรียนมัธยมศึกษาตอนต้น อายุ 14-24 ปี เข้าร่วม**

**ขอเชิญชวนนักศึกษาหรือเทียบเท่า (ปวช./ปวส.) ทั่วประเทศ และนักเรียนมัธยมศึกษาหรือเทียบเท่า (ปวช./ปวส.) ทั่วประเทศ**

เข้าร่วมกิจกรรมการแข่งขันนำเสนอความคิดสร้างสรรค์ สอดคล้องกับเป้าหมาย SDGs : SUSTAINABLE DEVELOPMENT GOALS

ในงานโครงการกับเครือข่าย "จากเริ่มต้นอย่างสร้างสรรค์สู่การพัฒนาที่ยั่งยืน" (From Creative Startup to Sustainable Development)

**รางวัลชนะเลิศ 2,500 บาท พร้อมโล่รางวัลและประกาศนียบัตร**

**รางวัลรองชนะเลิศอันดับที่ 1 1,500 บาท พร้อมประกาศนียบัตร**

**รางวัลรองชนะเลิศอันดับที่ 2 500 บาท (2รางวัล) พร้อมประกาศนียบัตร**

\*จำนวนสมาชิกทีม 1-5 คน  
\*ทีมที่ใช้การนำเสนอ (Pitching) ในระดับต้น จะได้รับประกาศนียบัตร  
\*ผลการตัดสินของคณะกรรมการ ที่ว่ากันดีที่สุด

ระดับการศึกษา	กำหนดการ Pitching
กับระดับมัธยมศึกษา มหาวิทยาลัยศิลปากร	วันที่ 30 สิงหาคม 2565
กับนักเรียนมัธยมศึกษา หรือเทียบเท่า (ปวช./ปวส.) ทั่วประเทศ	วันที่ 31 สิงหาคม 2565

ณ พื้นที่ THE CONNECTOR สำนักงานบริหารวิจัย นวัตกรรมและสร้างสรรค์ มหาวิทยาลัยศิลปากร วิทยาเขตพระราชวังสนามจันทร์

สมัครได้ที่...

สอบถามรายละเอียดเพิ่มเติม 092-4310868

SURIC Silpakorn University

ขอเชิญนักศึกษา บุคลากร มหาวิทยาลัยศิลปากร และผู้สนใจทั่วไป เข้าร่วมโครงการอบรมเชิงปฏิบัติการ

**“การเพิ่มทักษะอาชีพการเพาะเห็ด ด้วยถุงเพาะเชื้อเห็ด ที่ย่อยสลายได้ทางชีวภาพ”**

**รศ.ดร.เอกพันธ์ บางยี่ขัน**  
อาจารย์ประจำคณะวิทยาศาสตร์ มหาวิทยาลัยศิลปากร

**นายมนตรี อุดมทวี**  
ผู้อำนวยการ : บริษัท สานรักในใจเพื่อชาติ จำกัด และคณะ

**สนใจสมัครได้ที่**

วันที่ 9 กรกฎาคม 2565 เวลา 8:00-17:00 น.

ณ สำนักงานบริหารการวิจัย นวัตกรรมและสร้างสรรค์ มหาวิทยาลัยศิลปากร วิทยาเขตพื้นที่ บริษัท startup และห้องปฏิบัติการ 1718 (อ.1) ภาควิชาจุลชีววิทยา คณะวิทยาศาสตร์ มหาวิทยาลัยศิลปากร

**จำนวนจำกัด เพียง 30 คนเท่านั้น!**

**(ฟรี!)** ค่าใช้จ่ายตลอดการอบรม พร้อมรับก่อนซื้อเฉพาะที่ผลิตที่บ้าน

Creativity in Reality for Life and Sustainability  
การสร้างนวัตกรรมเพื่อความยั่งยืนเพื่อชีวิตและการพัฒนาที่ยั่งยืน







# Reduced Inequalities

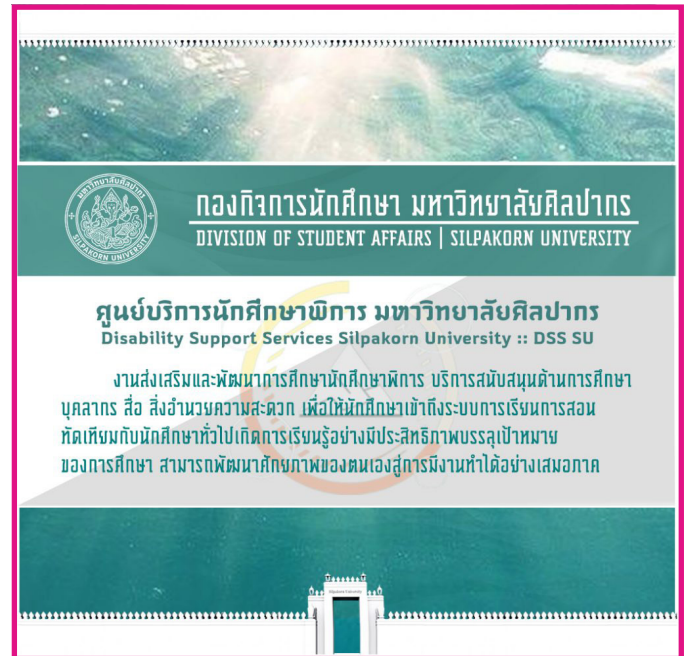
Reduce inequality within and among countries

ลดความเหลื่อมล้ำทั้งภายในและระหว่างประเทศ

## Inclusivity and Support for Students with Disabilities at Silpakorn University

Silpakorn University has established policies, criteria, and procedures to admit students with disabilities, aiming to promote educational opportunities and create equal educational environments. Furthermore, the university has opened opportunities for disabled individuals to join its workforce, with two individuals currently employed in the Human Resources department. Link : [https://lawapp.su.ac.th/uploads/3-ST66-6-9\\_2306090856.pdf](https://lawapp.su.ac.th/uploads/3-ST66-6-9_2306090856.pdf)

Recognizing the importance of promoting and developing the education of students with disabilities, the university has established a Student Disability Service Center. This center ensures that students with disabilities can access an inclusive learning system, enabling them to learn effectively, achieve their educational goals, and develop their capabilities for future employment opportunities. Link : [https://dsa.su.ac.th/ksu/?page\\_id=10136](https://dsa.su.ac.th/ksu/?page_id=10136)



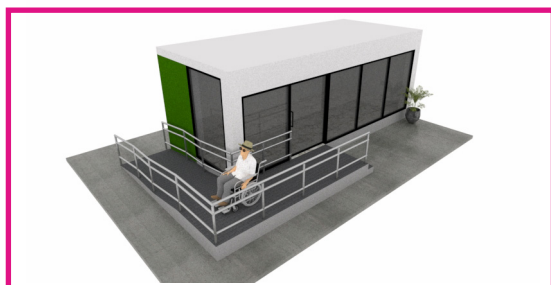
Additionally, the Central Library of Silpakorn University, in all three campuses, provides various facilities and services to enhance accessibility for individuals with physical disabilities. These include the installation of elevators within buildings, ramps for building access, and accessible restroom facilities.

Furthermore, the university has created audio books and online radio programs tailored for individuals with visual impairments. Some of the resources available include:

**“Royal Voices,”** a collection of audio resources: Royal Voices

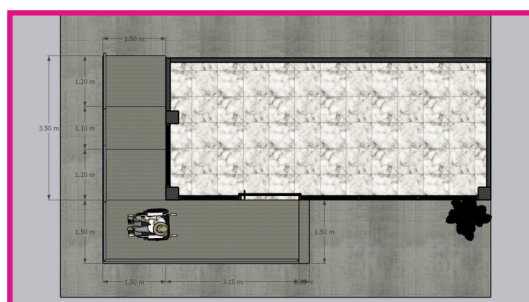
SNC Library Podcast by the Sanam Chandra Palace Library: SNC Library Podcast

Podcasts available on the Spotify application: Spotify Podcasts



### Promoting Educational Equality and Reducing Disparities for International Students

Silpakorn University supports and promotes educational opportunities for international students from low-income countries to reduce educational disparities. This initiative aims to empower individuals with knowledge and abilities, allowing them to apply their expertise for the greater good. A total of 89 students from 11 different countries benefit from this program. In addition, support and encouragement are extended to international students from various minority and underrepresented groups. This includes students from the Thai Yai ethnic group, further enhancing educational opportunities and reducing educational inequalities for international students from diverse backgrounds.







# Sustainable Cities and Communities

Make cities and human settlements inclusive, safe, resilient and sustainable

ทำให้เมืองและการตั้งถิ่นฐานของมนุษย์มีความปลอดภัย ทั่วถึง พร้อมรับการเปลี่ยนแปลงและพัฒนาอย่างยั่งยืน

## Silpakorn University's Art and Heritage Halls

Silpakorn University supports art and heritage through its Art and Heritage Halls, including the Wang Tha Phra in Bangkok, the Sanam Chandra Palace in Nakhon Pathom province, and various faculty-specific art halls. These venues are used for displaying creative works in art, culture, academic discussions, and film screenings throughout the year. Additionally, there are significant historical sites, open spaces, and green areas within Silpakorn University's wang Tha Phra campus which are open to the public for viewing without any entrance fees. Furthermore, Silpakorn University provides access to its libraries and archives for the general public.



## “Exchange and Learn” art exhibition project

Silpakorn University supports local cultural initiatives to preserve cultural heritage. For example, the Faculty of Painting Sculpture and Graphic Arts at Silpakorn University organized the “Exchange and Learn” art exhibition project, which showcased the works of Thai art faculty members and students from the Thai Art Department to the local community. This project took place in the Phra Prom Phi Chit Architecture Hall at the Faculty of Architecture, Wang Tha Phra campus in Bangkok. The project ran from November 2022 to February 2023, serving as an academic service to the community.







# Sustainable Cities and Communities

Make cities and human settlements inclusive, safe, resilient and sustainable

ทำให้เมืองและการตั้งถิ่นฐานของมนุษย์มีความปลอดภัย ท້วถึง พร้อมรับการเปลี่ยนแปลงและพัฒนาอย่างยั่งยืน

## Exhibition of mural paintings copied from the wall of Wat Yai Suwannaram Temple

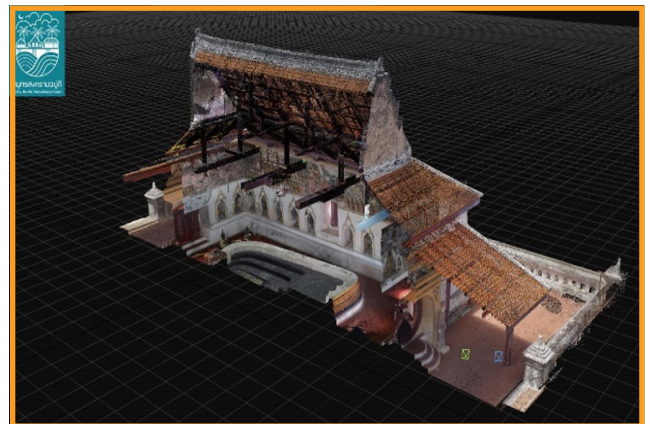
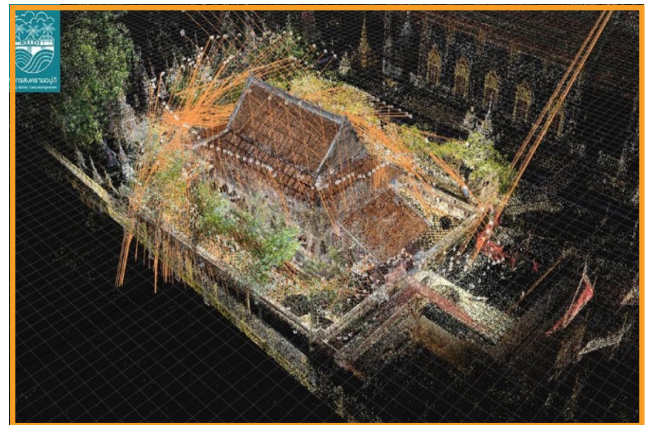
The Faculty of Painting Sculpture and Graphic Arts at Silpakorn University, organized an exhibition of mural paintings copied from the wall of Wat Yai Suwannaram Temple in Phetchaburi Province. The exhibition took place from January 19 to 21, 2023, at the Art Center, Silpakorn University, Wang Tha Phra campus, Bangkok, Thailand.



## Better-Living Samut Songkharm project: Turning Challenges into Opportunities to Enhance the Potential of Samut Songkharm city with Knowledge and Technology from Silpakorn University

The Better-Living Samut Songkharm' project is a research initiative aimed at seeking information and developing a knowledge base for driving a creative economy based on the local culture, environment, and community lifestyles. The project has received research funding and recommendations from the Program Management Unit on Area Based Development (PMU A), and it received the Outstanding Research Project Award in 2021 under the framework of university research for cultural development. The research process begins with a detailed study and exploration of local data, and on-site surveys in collaboration with local communities, especially with the local administrative organization of Amphawa District, the sub-district administration organization of Bang Chang, and the Bang Sakae community. The research team employs interdisciplinary knowledge, including architecture, social sciences, humanities, sciences, and information technology. The findings are used to design a knowledge set that can be practically applied. The results of this research project have led to the creation of cultural heritage maps, local cultural and creative industries, and a

geographic information system related to local culture, local craftsmen, artists, and cultural entrepreneurs. This system can be expanded and used to create sustainable economic and community development in the region.” The project utilizes interdisciplinary knowledge and technology, such as geographic information systems and 3D laser scanning, to create a foundation for sustainable development in the region, aligning with the goals of SDG 11 (Sustainable Cities and Communities). For more information, please visit this Facebook page : <https://www.facebook.com/LivingBetterSamutsongkram>







# Sustainable Cities and Communities

Make cities and human settlements inclusive, safe, resilient and sustainable

ทำให้เมืองและการตั้งถิ่นฐานของมนุษย์มีความปลอดภัย ท້วทั้ง พร้อมรับการเปลี่ยนแปลงและพัฒนาอย่างยั่งยืน

## “Reviving the Old Community of Bang Ao” project

“Reviving the Old Community of Bang Ao” project, in the Bang Ao community, Bang Ao Sub-district, Bang Phlat District, Bangkok, Thailand. The event, which aimed to gather knowledge about traditional backyard gardens in the Bang Ao area and promote the registration of cultural heritage related to backyard gardens, featured local speakers. Approximately 150 people participated in the event, which was held on April 8, 2023.



## French Language and Cultural Revival Event in Samut Songkhram Province

The “French Language and Cultural Revival for Sustainable Tourism and Creative Industries Experience, 2nd Edition” event was held as part of the “French Language and Cultural Revival, Tourism, and Creativity” project. The event took place in the Ampha Wa and Tha Ka communities of Samut Songkhram Province on March 11-12, 2023. This initiative was organized by the Department of French, Western Languages Department, Faculty of Archaeology, and aimed to enhance students’ learning and presentation of information regarding the local way of life and culture of the community using the French language.



### Academic Symposium: Expressing Local Insights through Arts and Literature”

The Academic Discussion Project on Local Identity through Arts and Literature” is conducted by the Faculty of Archaeology, Silpakorn University. It aims to gather diverse local knowledge derived from historical narratives, document collection, and on-site data collection. This project follows an interdisciplinary approach and is disseminated through literature and various performances, reflecting the cultural and social aspects of each region. It also plays a role in preserving and promoting the significant local performing arts. The project consists of two phases: the first event, “Memories and Traditions,” will take place on December 16, 2023, and the second event, “Cultural Heritage,” will be held on February 28, 2024, at Silpakorn University, Wang Tha Phra.



### Antiquities Documentation Project at Wat Chanasongkhram Temple, Bangkok

The project “Survey, Photography, and Documentation of Antiquities” is carried out by the Faculty of Archaeology, at Wat Chanasongkhram Rajavoramahaviharn Temple in Bangkok on March 18-19 and April 1-2, 2023. This project involves the survey, photography, and documentation of palm-leaf manuscripts and ancient documents. It provides students with the opportunity to gain practical field experience in the fields of paleography and ancient documents. The project begins with the assessment of the condition of documents stored at the temple. Six cabinets containing preserved documents are found. Subsequently, photographs of the documents are taken, their condition is evaluated, they are cleaned, and their details are recorded. The original documents are photographed to create a digital database stored within the Department, and copies are provided to Wat Chanasongkhram Rajavoramahaviharn Temple for future academic research and dissemination of knowledge.





# Sustainable Cities and Communities

Make cities and human settlements inclusive, safe, resilient and sustainable

ทำให้เมืองและการตั้งถิ่นฐานของมนุษย์มีความปลอดภัย ท້วถึง พร้อมรับการเปลี่ยนแปลงและพัฒนาอย่างยั่งยืน



## Culture-Oriented Learning Development Activities for Students

Culture-Oriented Learning Development Activities for Secondary School Students at Makut Ratchawitthayalai School, Klaeng District, and Baan Khai School, Baan Khai District, Rayong Province. This activity took place from November 15th to 17th, 2022, organized by the Department of Anthropology, Faculty of Archaeology. The purpose of this event was to enhance the preservation and dissemination of cultural and lifestyle knowledge through the study of local research in Rayong Province. A total of 90 students from the local area participated in this activity, where they learned about community culture and history through the use of culture as a tool.



### Knowledge on 'Art and History in Thailand' to the General Public

Project for Providing Knowledge and Understanding of 'Art and History in Thailand' to the General Public at the Faculty of Archaeology, Silpakorn University, Wang Tha Phra, and the National Museum, Phra Nakhon. This project took place on January 7, 14, 21, and February 4, 2023. The project included classroom lectures and off-site lectures at the National Museum, Phra Nakhon. The content aimed to enhance participants' understanding of beliefs, meanings, and the various forms of archaeological sites and artifacts in different historical periods in Thailand. Additionally, training materials were provided to facilitate a deeper understanding and further knowledge development for the participants.



### Other activities related to culture and performances

There are activities related to culture and performances associated with local traditions, local wisdom, language, and knowledge. These include:

**'Inspiration for Art Creation from Landscapes and Tourism'** project in Khlong Wal, Prachuap Khiri Khan Province, held from November 7-9, 2022.



**'Landscape Arts Exhibition 2'** held from March 1-17, 2023.







# Sustainable Cities and Communities

Make cities and human settlements inclusive, safe, resilient and sustainable

ทำให้เมืองและการตั้งถิ่นฐานของมนุษย์มีความปลอดภัย ท້วตั้ง พร้อมรับการเปลี่ยนแปลงและพัฒนาอย่างยั่งยืน

**‘Thai Music Competition for High School Students - Western Region’** held on April 2, 2023.



**‘Literature and Art: Akson Thap Kaew Wad Waew Wannasilp’** event, which took place on November 16, 2022.



**‘Tubkaew Sangkeet Arts Festival 12’** held on March 17, 2023, and many more.



## Sustainable Transportation and Housing Initiatives

Silpakorn University is committed to promoting sustainable transportation and living conditions. Efforts have been made to improve the campus infrastructure to provide safe pedestrian pathways, making it conducive for walking.

The university also offers a free electric rail service for students and staff to facilitate convenient and cost-free transportation within the various parts of the university campus.



Regarding accommodation, Silpakorn University provides affordable housing services for both faculty and staff, which can be found at this link. : <https://www.adsc.su.ac.th/ADSC21/ADSCKnowledge/KM-2020-008.pdf>



Similarly, students can access accommodation options within the university campus through the following link: [https://dsa.su.ac.th/ksu/?page\\_id=95](https://dsa.su.ac.th/ksu/?page_id=95)





Ensure sustainable consumption and production patterns

รับรองแผนการบริโภคและการผลิตที่ยั่งยืน

## Supporting the Production and Use of Environmentally Friendly Packaging to Reduce the Use of Plastic Products

Silpakorn University, Phetchaburi Information Science Campus, signed a memorandum of understanding to support the production and use of environmentally friendly packaging Bio PBS (Polybutylene succinate) with PTT Global Chemical Public Company Limited, a leading initiative to use glass and paper Bio PBS packaging along with bioplastic straws to reduce environmental pollution. This initiative is in line with the Smart and Green Campus policy, and the used glass and straws are collected and used as components in composting for tree maintenance within the university.

Furthermore, Silpakorn University actively promotes and advocates for proper waste separation by providing separate bins for different types of waste within the campus. These bins are categorized for organic waste, recyclable waste, general waste, hazardous waste, and public waste. Additionally, the university encourages the reduction of plastic bag, foam, and plastic glass usage. This is done by avoiding the acceptance of plastic bags when making small purchases, opting for reusable containers or utensils, such as cloth bags, water bottles, or glassware. The university also emphasizes the use of products made from naturally biodegradable materials and encourages the proper cleaning and separate disposal of plastic and foam

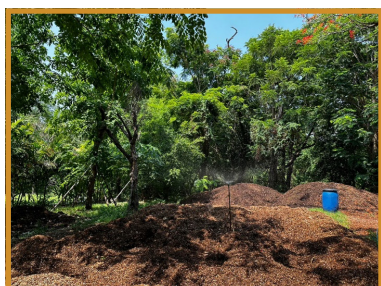
containers, ensuring they are not mixed with other types of waste.



## Sustainable Green Area Management and Organic Waste Utilization

Silpakorn University has a significant green area with many trees and gardens. Regular maintenance activities are carried out to ensure cleanliness and safety, which includes tree trimming, grass cutting, and collecting leaves within the garden areas. This is done to keep the environment clean and tidy. The collected leaves, branches, and grass are categorized as organic waste, which can naturally decompose but requires a long period. Recognizing the importance of this waste, it is processed through a shredding machine to reduce it into smaller pieces, which accelerates the decomposition process. The processed

organic waste is then used to improve and fertilize the soil for plants, rather than being disposed of, thus reducing the issue of increasing organic waste volume in the future



### Supporting Innovation in the Use of Biodegradable Materials for Creating Unique and Environmentally-Friendly Products

Silpakorn University has supported a project titled “Innovation in the Use of Biodegradable Materials for Creating Unique Products that Reflect Loyalty to the Institution of His Majesty the King,” led by Associate Professor Dr. Khajornsak Nakpan and Associate Professor Dr. Supavee Sirinkraporn from the Faculty of Decorative Arts. This project utilizes soil as a source to generate cellulose fibers and melamine granules to produce environmentally friendly materials using biologically

synthesized bacterial cellulose technology. The resulting material is clean, biodegradable, body-friendly, and environmentally non-polluting. It is suitable for application in creative design.

### Supporting Safe and Environmentally-Friendly Food Markets: Greenery Market @ SU

Silpakorn University’s ‘Greenery Market @ SU’ project supports environmentally friendly food markets. It allows local vendors to sell products with eco-friendly practices within the university’s designated area. The initiative promotes responsible consumption and sustainable production by reducing plastic use and showcasing local culture.

The project enhances distribution channels for local farmers, improves market aesthetics, and increases consumer engagement. This boosts farmer income and job opportunities in the region, providing safe, high-quality, and fairly priced food to consumers within and outside the university.







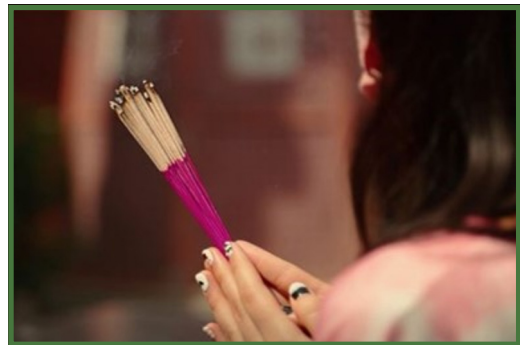
# Climate Action

Take urgent action to combat climate change and its impacts  
 ดำเนินมาตรการเร่งด่วนเพื่อรับมือกับการเปลี่ยนแปลงสภาพภูมิอากาศและผลกระทบ

Silpakorn University prioritizes addressing air pollution, which contributes to weather changes and health problems in the region. This is achieved by leveraging expertise in science and arts, fostering collaboration between government, private sector, and local communities, and implementing the following initiatives:

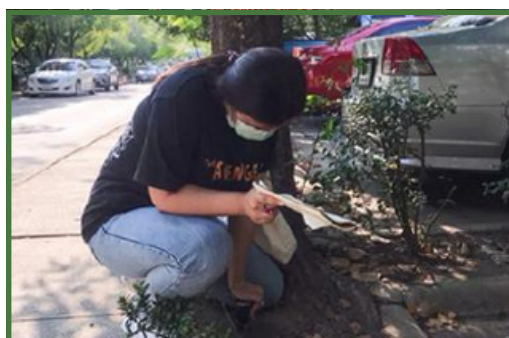
## Project: Managing Air Pollution from Incense Burning in Yaowarat Area

Researchers from Silpakorn University along with local researchers, collaborate with the government, communities, and temple authorities in the Yaowarat area to address air pollution (PM2.5) resulting from incense burning and ceremonies at temples, both in the Yaowarat area and elsewhere in the country. This collaborative effort focuses on finding sustainable solutions, coordinating actions within the defined scope, and respecting the cultural heritage of the region. The project aims to improve air quality, positively impacting the lives of the local population and promoting sustainable development at the regional level.



### **Project: Biodiversity and Carbon Sequestration in the Green Area of Nakhon Pathom City**

Led by the Department of Biology, Faculty of Science, Silpakorn University, in collaboration with various faculties, this project aims to create a comprehensive database on plant diversity and carbon storage in the green areas of Nakhon Pathom City. The data will support the sustainable management of urban green spaces, including their use for education, cultural preservation, and environmental enhancement. The study encompasses carbon sequestration calculations for various plant species, emphasizing key trees like the Sacred Fig (*Ficus religiosa* L.) and their contributions to carbon balance. This initiative not only benefits the local community but also aids in making Silpakorn University a green campus, focused on maintaining natural ecosystems and community well-being.







# Life below Water

Conserve and sustainably use the oceans, seas and marine resources for sustainable development

อนุรักษ์และใช้ประโยชน์จากมหาสมุทรและทรัพยากรทางทะเลเพื่อการพัฒนาอย่างยั่งยืน

Silpakorn University is actively involved in promoting sustainable aquatic and marine ecosystems and the responsible utilization of ocean and sea resources, including lakes, rivers, and coastal resources. This includes sustainable management of fisheries, aquaculture, and eco-friendly tourism activities that benefit local communities. These efforts are carried out through education and various projects and activities.

## Promoting Crab Banks and Establishing a Community Network for Sustainable Restoration and Utilization of Coastal Resources in Phetchaburi and Prachuap Khiri Khan Provinces

The project aims to promote crab banks and create a sustainable community network for the restoration and sustainable use of coastal resources in the provinces of Phetchaburi and Prachuap Khiri Khan. This involves educating coastal communities in crab seedling cultivation to replenish crab populations in the sea. Additionally, it raises awareness about the conservation of crab and coastal aquatic resources. The project supports crab banks to enhance crab production, expand their activities to serve as learning centers and community aquatic animal banks (e.g., squid banks), and establish a community network for crab banks.



## Studying Fish Resources in the Phra Ratcha Damri Natural Study Park Area of Suan Phueng District, Ratchaburi Province

The Faculty of Animal Sciences and Agricultural Technology conducted a project to study fish resources in the Phra Ratcha Damri Natural Study Park area in Suan Phueng District, Ratchaburi Province. The study aimed to conserve and develop natural resources for local learning and community development based on biodiversity. From March 2022 to January 2023, the study identified 19 families and 46 species of fish. The study found the highest fish diversity in downstream aquatic ecosystems, followed by waterfall habitats and hill streams. The project also established a local fish resource database and educated the community and youth about the importance of conservation and sustainable economic use of the resources for future generations.







# Life below Water

Conserve and sustainably use the oceans, seas and marine resources for sustainable development

อนุรักษ์และใช้ประโยชน์จากมหาสมุทรและทรัพยากรทางทะเลเพื่อการพัฒนาอย่างยั่งยืน

## Differentiating Saccularia Larvae in Bivalves Using Morphological and Molecular Techniques

The Faculty of Science conducted a study to differentiate bivalve host species of Saccularia larvae in the lower central region of Thailand using morphological characteristics and molecular techniques. This research aimed to assess the biodiversity of bivalve species in the area and promote the well-being of local communities living near water sources in the lower central region of Thailand.

## Open Innovation Camp 2022: Sustainable Innovation for Society

The practical training program, Open Innovation Camp 2022, took place from November 23-25, 2022, within the framework of the Business Incubation Unit at Silpakorn University's Lower Central Region Network. The camp was held in Khun Sumut Chin Village, Lam Fa Pha Sub-district, Samut Prakan Province. The objectives of the program were to engage students in creating innovative ideas to address the environmental issues caused by marine litter management. It involved skill-building, knowledge enhancement, on-site marine litter surveys to raise awareness of current environmental challenges. The program also aimed to foster entrepreneurial skills and promote innovative business ideas among Silpakorn University students. Additionally, a mangrove planting activity was conducted to conserve the coastal ecosystem and provide habitat for small aquatic animals.







# Life on Land

Protect, restore and promote sustainable use of terrestrial ecosystems, sustainably manage forests, combat desertification, and halt and reverse land degradation and halt biodiversity loss

ปกป้อง ฟื้นฟู และส่งเสริมการใช้ประโยชน์จากระบบนิเวศทางบกอย่างยั่งยืน

Silpakorn University supports the sustainable conservation, restoration, and utilization of terrestrial ecosystems to reduce natural habitat loss and biodiversity decline. Additionally, efforts are made to ensure food and water security while enhancing resilience and mitigating the impacts of climate change through various projects. In the year 2022, several projects were undertaken to achieve these goals.

## **Research Project: Building Knowledge on Silica Accumulation in Bamboo for Prototype Nanosilica Extraction Technology Development to Enhance Sustainable Self-Reliance**

Silpakorn University funds research projects aimed at creating a knowledge base for silica accumulation in bamboo and developing prototype technology for extracting nanosilica from bamboo in Kanchanaburi Province. This initiative intends to enhance long-term sustainability, focuses on studying and generating new knowledge related to silica accumulation in bamboo found in Thailand. This research benefits students, researchers, farmers, as well as governmental and private sectors. The study is conducted at multiple research sites, including Thong Pha Phum District, Kanchanaburi, Sawi District, Chumphon, and Wang Nam Khieo District, Nakhon Ratchasima. This research aims to build confidence among bamboo growers and businesses in promoting commercial bamboo cultivation, fostering cooperation with the Thai bamboo network to enhance the value of bamboo through research, and conserving local bamboo species, such as the Southern Thai Bamboo Network's effort in preserving southern bamboo and driving bamboo cultivation for carbon credits.







# Life on Land

Protect, restore and promote sustainable use of terrestrial ecosystems, sustainably manage forests, combat desertification, and halt and reverse land degradation and halt biodiversity loss

ปกป้อง ฟื้นฟู และส่งเสริมการใช้ประโยชน์จากระบบนิเวศทางบกอย่างยั่งยืน

## Silpakorn University supports providing knowledge and understanding of nature and the environment.

Silpakorn University supports environmental education and youth engagement activities aimed at raising awareness of environmental conservation. The program includes environmental quality monitoring and exploration activities, such as a field survey at Wat Suan Yai, Bang Kruai District, Nonthaburi Province, in collaboration with the Electricity Generating Authority of Thailand's North Bangkok Power Plant. The event took place on November 24, 2022.



Silpakorn University supported and permitted the use of its university grounds around the Sa Keaw Pond and Sala Sa Keaw for the filming of the program "Nature Showcase" on September 17-18, 2022. A faculty member specializing in birds, presented the importance of cranes in both forest and urban ecosystems to raise awareness, understanding, and inspire young people to learn about nature. The program aired on ALTV Channel 4 and ThaiPBS Channel 3.

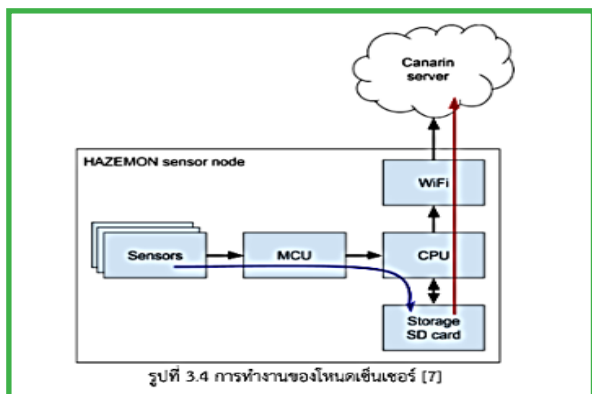
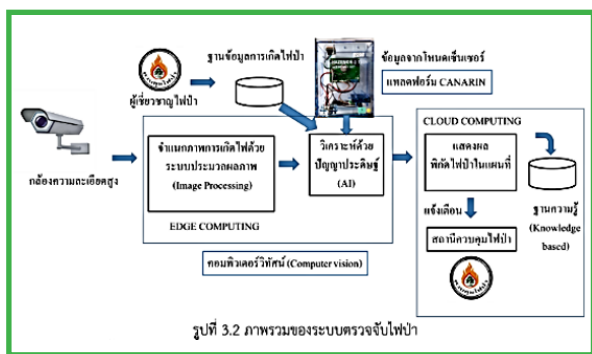


### Development of Fire Detection System Using Artificial Intelligence

Silpakorn University received funding to develop and transfer wildfire detection knowledge using artificial intelligence. The developed cameras, using artificial intelligence, provide real-time information to control centers, improving wildfire response and reducing losses. The research findings will be shared with wildfire control personnel and communities, promoting citizen involvement in wildfire detection and control. Additionally, support is provided for the “Baan Ko Sandbox” project.

### Research to identify cercarial stage in freshwater gastropods

Silpakorn University supports research to identify cercarial stage in freshwater gastropods using morphological and molecular techniques in the lower central part of Thailand. This research aims to diversify the understanding of freshwater gastropods, promote biodiversity research, and enhance disease prevention while supporting local economic initiatives.







# Peace, Justice and Strong Institutions

Promote peaceful and inclusive societies for sustainable development, provide access to justice for all and build effective, accountable and inclusive institutions at all levels

ส่งเสริมสังคมสงบสุข ยุติธรรม ไม่แบ่งแยก เพื่อการพัฒนาอย่างยั่งยืน

Silpakorn University values freedom of thought and active participation in various activities. They have created a central platform with safe spaces for diverse civic engagement. The central library is a key supporter of learning, teaching, and research activities across the university, offering users the freedom to request spaces for exhibitions, events, and discussions under the umbrella of education and personal development.

## Silpakorn University Announcement - Policy to Combat Corruption and Misconduct

The university has also declared a policy to combat corruption and misconduct, aiming to uphold moral and ethical standards, transparency, and organizational integrity. This policy is to be adhered to rigorously by all administrators and staff within the organization. : [https://lawapp.su.ac.th/uploads/3-OT64-4-23-4\\_2104241416.pdf](https://lawapp.su.ac.th/uploads/3-OT64-4-23-4_2104241416.pdf)

## “No Gift Policy”

Silpakorn University has declared a “No Gift Policy” to combat corruption and misconduct in all forms. The university aims to promote transparency and public service by prohibiting all staff from giving or receiving gifts related to their duties. Additionally, the university has established ethical guidelines for staff behavior to

prevent misconduct and maintain a harmonious working environment. : [http://ita.su.ac.th/?page\\_id=2210](http://ita.su.ac.th/?page_id=2210)

**NO GIFT POLICY**  
เพื่อส่งเสริมมาตรการป้องกันและต่อต้านการทุจริตคอร์รัปชัน

มหาวิทยาลัยศิลปากร

**งดรับ / งดให้  
ของขวัญ**

งดรับ / งดให้ ของขวัญและของกำนัลทุกชนิดจากการปฏิบัติหน้าที่

เพื่อเป็นการเสริมสร้างวัฒนธรรมองค์กร ค่านิยมสุจริตในการปฏิบัติงานให้มีคุณธรรมและความโปร่งใส หรือลดโอกาสในการรับสินบนและผลประโยชน์ทับซ้อน

[www.su.ac.th](http://www.su.ac.th) 0 2105-4686 Silpakorn University

## Silpakorn University Announcement – Do and Don’t Ethical Guidelines for Staff

Silpakorn University has issued ethical guidelines for staff behavior, known as “Do’s & Don’ts.” These guidelines aim to establish ethical standards for university staff to prevent misconduct and maintain a peaceful working environment.

## Promoting Student Representation and Elections for Transparency and Accountability in Line with SDG 16

Silpakorn University has established measures related to student representation in the university's governance and local-level stakeholders that are not part of the university. The Student Affairs Division supports student involvement through the process of selecting student leaders. This includes the Student Council and the Student Dormitory Committee, both of which are elected annually. In the 2022 academic year, 1 team of students registered for the Student Council elections, with 1,773 students participating in the selection process out of a total student population of 23,654 (7.50% participation). Additionally, for the Student Dormitory Committee elections in the 2022 academic year, 8 teams of students registered, and all 8 teams were elected as no other candidates contested the positions. Out of 2,088 dormitory residents, 904 students exercised their right to vote, representing 43.30% of the total dormitory population.



งานส่งเสริมและพัฒนาศึกษานักศึกษา  
กองกิจการนักศึกษา มหาวิทยาลัยศิลปากร

**9 มีนาคม 2565**  
09.00 - 15.00 น.

ขอเชิญชวนนักศึกษาร่วมกันใช้สิทธิ  
**เลือกตั้งคณะกรรมการบริหาร "องค์การนักศึกษา" มหาวิทยาลัยศิลปากร ประจำปีการศึกษา 2565**

ช่องทางออนไลน์  
[www.dsa.su.ac.th](http://www.dsa.su.ac.th)  
รายละเอียดเพิ่มเติม

**50SU 2565**  
นายกองค์การนักศึกษา

**Wang Thapra**  
นางสาว วัง ทศพร

**Sunem Chan**  
นางสาว ชัน สุเนม

**Petchaburi**  
นางสาว เพ็ชระบุรี

Grid of candidate posters for the 2022 Student Dormitory Committee elections, showing multiple teams of candidates.





# Peace, Justice and Strong Institutions

Promote peaceful and inclusive societies for sustainable development, provide access to justice for all and build effective, accountable and inclusive institutions at all levels

ส่งเสริมสังคมสงบสุข ยุติธรรม ไม่แบ่งแยก เพื่อการพัฒนาอย่างยั่งยืน

## Promoting Ethics, Transparency, and Accountability at Silpakorn University

Silpakorn University has made significant strides in promoting ethics, transparency, and accountability in its operations, aligning with the principles of SDG 16. The university's commitment to these values is evident in its annual budget announcement for fiscal year 2021 (B.E. 2564). The announcement emphasizes the cultivation of moral and ethical values, along with a sense of duty and honor, among its civil servants. This commitment is closely intertwined with the efficient management of public affairs to prevent and combat corruption and misconduct at all levels of government. Moreover, Silpakorn University is dedicated to meeting the public's demands by providing fast, accurate, impartial, transparent, and fair services, thereby fostering public trust in the government system. : [https://lawapp.su.ac.th/uploads/3-0T64-4-23-2-L\\_2104241338.pdf](https://lawapp.su.ac.th/uploads/3-0T64-4-23-2-L_2104241338.pdf)




ประกาศมหาวิทยาลัยศิลปากร  
เรื่อง การแสดงเจตจำนงสุจริตด้านคุณธรรมและความโปร่งใสในการดำเนินงานของมหาวิทยาลัย  
ประจำปีงบประมาณ พ.ศ. ๒๕๖๔

ตามเจตนารมณ์ของรัฐธรรมบัญญัติแห่งราชอาณาจักรไทย พระราชบัญญัติข้อมูลข่าวสารของราชการ พ.ศ. ๒๕๔๐ พระราชบัญญัติว่าด้วยหลักเกณฑ์และวิธีการบริหารกิจการบ้านเมืองที่ดี พ.ศ. ๒๕๔๖ ยุทธศาสตร์ชาติว่าด้วยการป้องกันและปราบปรามการทุจริตระยะที่ ๓ (พ.ศ. ๒๕๖๐ - ๒๕๖๔) กลยุทธ์ที่ ๕ การพัฒนา วิเคราะห์และบูรณาการระบบการประเมินด้านคุณธรรมและความโปร่งใสในการดำเนินงานของหน่วยงาน เพื่อเชื่อมโยงกับแนวทางการยกระดับคะแนนดัชนีการรับรู้การทุจริต (Corruption Perception Index : CPI) ของประเทศไทยและนโยบายของรัฐบาล ข้อที่ ๑๐ การส่งเสริมการบริหารราชการแผ่นดินที่มีธรรมาภิบาลและการป้องกันและปราบปรามการทุจริตและประพฤติมิชอบในภาครัฐ กำหนดให้ปลูกฝังค่านิยมคุณธรรม จริยธรรมและจิตสำนึกในการรักษาศักดิ์ศรีความเป็นข้าราชการและความซื่อสัตย์สุจริตควบคู่กับการบริหารจัดการภาครัฐที่มีประสิทธิภาพเพื่อป้องกันและปราบปรามการทุจริตและประพฤติมิชอบของเจ้าหน้าที่ของรัฐทุกระดับและตอบสนองความต้องการพร้อมอำนวยความสะดวกแก่ประชาชน เพื่อสร้างความเชื่อมั่นในระบบราชการ ซึ่งมหาวิทยาลัยได้มีประกาศมหาวิทยาลัยศิลปากร เรื่อง การแสดงเจตจำนงสุจริตด้านคุณธรรมและความโปร่งใสในการดำเนินงานของมหาวิทยาลัย ลงวันที่ ๓๐ พฤษภาคม ๒๕๖๒ แล้ว นั้น

อธิการบดีมหาวิทยาลัยศิลปากรโดยมีคณะกรรมการบริหารมหาวิทยาลัยศิลปากรในการประชุม ครั้งที่ ๘/๒๕๖๔ เมื่อวันที่ ๒๐ เมษายน ๒๕๖๔ จึงได้ยกเลิกประกาศมหาวิทยาลัยศิลปากร เรื่อง การแสดงเจตจำนงสุจริตด้านคุณธรรมและความโปร่งใสในการดำเนินงานของมหาวิทยาลัย ลงวันที่ ๓๐ พฤษภาคม ๒๕๖๒ และให้กำหนดนโยบายคุณธรรมและความโปร่งใสเพื่อเป็นแนวปฏิบัติ สำหรับบุคลากรของมหาวิทยาลัยยึดถือ และปฏิบัติตามคู่มือการปฏิบัติตามกฎระเบียบและข้อบังคับอื่น ๆ ของมหาวิทยาลัย โดยมหาวิทยาลัยศิลปากรขอประกาศเจตจำนงสุจริตด้านคุณธรรมและความโปร่งใสในการดำเนินงานของมหาวิทยาลัยและขอให้เชื่อมั่นที่จะบริหารและปฏิบัติงานและปฏิบัติงานที่มุ่งตอบสนองต่อความต้องการของประชาชนและผู้รับบริการ ด้วยบริการที่รวดเร็ว ถูกต้อง เสมอภาค โปร่งใส และเป็นธรรมภายใต้นโยบายทั้ง ๖ ประการ ดังนี้

๑. ด้านความโปร่งใส มีการเปิดเผยข้อมูลข่าวสารของทางราชการให้แก่ผู้มีส่วนได้เสียอย่างเป็นธรรมตรวจสอบได้ โดยประชาชนทั่วไปสามารถเข้าถึงข้อมูลของมหาวิทยาลัยได้อย่างสะดวกตามช่องทางที่มหาวิทยาลัยกำหนด โดยเฉพาะในส่วนของการจัดซื้อจัดจ้างทางพัสดุต้องตรวจสอบเกี่ยวกับผลประโยชน์ทับซ้อนเพื่อป้องกันมิให้ราชการเสียประโยชน์ รวมถึงมีระบบจัดการเรื่องร้องเรียนต่าง ๆ อย่างชัดเจนด้วย
๒. ด้านความพร้อมรับผิด บุคลากรมีความมุ่งมั่นตั้งใจปฏิบัติงานอย่างเต็มประสิทธิภาพโดยมุ่งผลสำเร็จของงานเป็นสำคัญ พร้อมรับผิดชอบในการปฏิบัติหน้าที่ให้บรรลุเป้าหมาย

In addition to the annual budget announcement, the university has also issued standards and principles for ethical conduct and service provision among its employees. These standards are designed to ensure that the university's employees, including staff and faculty, maintain a high level of ethical conduct and service quality, in line with the principles of SDG 16. : [https://lawapp.su.ac.th/uploads/3-OT64-4-23-9\\_2104250208.pdf](https://lawapp.su.ac.th/uploads/3-OT64-4-23-9_2104250208.pdf)



ประกาศมหาวิทยาลัยศิลปากร  
เรื่อง มาตรฐานและความเป็นธรรมในการปฏิบัติงานและการให้บริการของมหาวิทยาลัยศิลปากร

เพื่อให้การปฏิบัติราชการของพนักงานมหาวิทยาลัยศิลปากร ข้าราชการ ลูกจ้างประจำของส่วนราชการซึ่งปฏิบัติงานในมหาวิทยาลัยศิลปากร และลูกจ้างมหาวิทยาลัยศิลปากร มีมาตรฐานและ ความเป็นธรรมในการปฏิบัติงานและการให้บริการ ซึ่งมหาวิทยาลัยได้มีประกาศมหาวิทยาลัยศิลปากร เรื่อง มาตรฐานและความเป็นธรรมในการปฏิบัติงานและการให้บริการของมหาวิทยาลัยศิลปากร ลงวันที่ ๓๐ พฤษภาคม ๒๕๖๒ แล้ว นั้น

อธิการบดีมหาวิทยาลัยศิลปากรโดยมติคณะกรรมการบริหารมหาวิทยาลัยศิลปากร ในการประชุมครั้งที่ ๘/๒๕๖๔ เมื่อวันที่ ๒๐ เมษายน ๒๕๖๔ จึงให้ยกเลิกประกาศมหาวิทยาลัยศิลปากร เรื่อง มาตรฐานและความเป็นธรรมในการปฏิบัติงานและการให้บริการของมหาวิทยาลัยศิลปากร ลงวันที่ ๓๐ พฤษภาคม ๒๕๖๒ และให้กำหนดมาตรฐานและความเป็นธรรมในการปฏิบัติงานและการให้บริการของมหาวิทยาลัยศิลปากร โดยมีแนวทางการปฏิบัติที่สำคัญ ดังนี้

๑. การปฏิบัติราชการของพนักงานมหาวิทยาลัย ข้าราชการ ลูกจ้างประจำของส่วนราชการซึ่งปฏิบัติงานในมหาวิทยาลัยศิลปากร และลูกจ้างของมหาวิทยาลัย ให้ปฏิบัติงานตามคู่มือหรือมาตรฐานการปฏิบัติงานตามภารกิจหลัก โดยให้จัดทำรายงานผลการปฏิบัติงานตามคู่มือหรือมาตรฐานการปฏิบัติงานตามภารกิจหลักด้วย
๒. ให้พนักงานมหาวิทยาลัย ข้าราชการ ลูกจ้างประจำของส่วนราชการซึ่งปฏิบัติงานในมหาวิทยาลัยศิลปากร และลูกจ้างของมหาวิทยาลัย ปฏิบัติงานหรือให้บริการตามภารกิจหลักด้วยความ เป็นธรรม โดยมีการแสดงขั้นตอนการปฏิบัติงานตามภารกิจหลัก และระยะเวลาที่ใช้ในการดำเนินงานให้ผู้รับบริการหรือผู้มีส่วนได้ส่วนเสียทราบอย่างชัดเจน และจัดให้มีระบบการป้องกันหรือการตรวจสอบเพื่อป้องกันการละเว้นการปฏิบัติหน้าที่ตามภารกิจหลัก
๓. พนักงานมหาวิทยาลัย ข้าราชการ ลูกจ้างประจำของส่วนราชการซึ่งปฏิบัติงานในมหาวิทยาลัยศิลปากร และลูกจ้างของมหาวิทยาลัย ต้องปฏิบัติงานตามกฎหมาย กฏ ข้อบังคับ ระเบียบ ประกาศ มติคณะรัฐมนตรี คำสั่งของทางราชการและของมหาวิทยาลัยอย่างเคร่งครัด โดยยึดหลักความถูกต้องเป็นพื้นฐาน
๔. พนักงานมหาวิทยาลัย ข้าราชการ ลูกจ้างประจำของส่วนราชการซึ่งปฏิบัติงานในมหาวิทยาลัยศิลปากร และลูกจ้างของมหาวิทยาลัย ต้องปฏิบัติงานโดยยึดถือหลักความเสมอภาค และไม่เลือกปฏิบัติโดยไม่เป็นธรรมต่อบุคคล ไม่ว่าด้วยเหตุความแตกต่างในเรื่องถิ่นกำเนิด เชื้อชาติ ภาษา เพศ อายุ ความพิการ สภาพทางกายหรือสุขภาพ สถานะของบุคคล ฐานะทางเศรษฐกิจหรือสังคม ความเชื่อทางศาสนา การศึกษาอบรม หรือความคิดเห็นทางการเมืองอันไม่ขัดต่อบทบัญญัติแห่งรัฐธรรมนูญ หรือเหตุอื่นใด





# Partnerships for the Goals

Strengthen the means of implementation and revitalize the Global Partnership for Sustainable Development

สร้างพลังแห่งการเป็นหุ้นส่วนความร่วมมือระดับสากลต่อการพัฒนาที่ยั่งยืน

## Collaboration with International Organizations for Sustainable Development

Silpakorn University collaborates with international organizations such as ASAIHL and ASEA-UNINET to support sustainable development. These partnerships aim to enhance academic excellence, research, and international cooperation. ASAIHL focuses on promoting quality in teaching, research, and public service, while ASEA-UNINET fosters global cooperation in education and research. These efforts align with SDG 17, emphasizing the importance of partnerships for sustainable development.

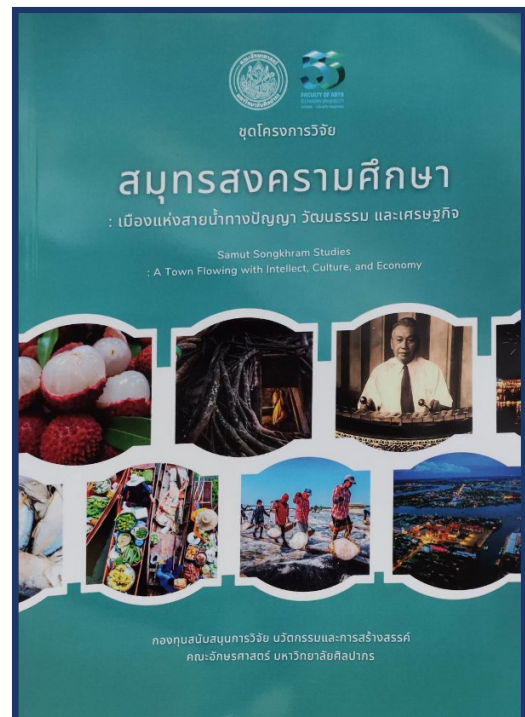
## Collaboration for Sustainable Development

Silpakorn University collaborates with organizations and institutions both within and outside Thailand for sustainable development. The university partners with international organizations like the National Aeronautics and Space Administration (NASA), the Aerosol Robotic Network (AERONET), and the Micro-Pulse Lidar Network (MPLNET) for research initiatives related to environmental monitoring and atmospheric research. Additionally, Silpakorn University engages in educational cooperation with foreign institutions to promote language and cultural exchange, emphasizing cultural understanding and global cooperation. The American Chamber of Commerce in Thailand (AMCHAM) supports the university by providing scholarships to students in need, enabling them to pursue their studies effectively. These collaborations reflect Silpakorn University's commitment to supporting sustainable development and fostering global partnerships.

## Projects Supporting Sustainable Development Goals

Silpakorn University is actively involved in research projects that align with sustainable development goals. In collaboration with local schools and communities, Silpakorn University undertakes academic initiatives to foster mutual learning and knowledge sharing. The university also focuses on knowledge transfer, emphasizing the impact of research, creativity, and academic service on the community. Silpakorn University has initiated digital development projects aimed at promoting and creating value for local communities, thus strengthening the university's identity and partnerships.

Additionally, the university organizes exchange programs to facilitate research, creativity, and academic service for the benefit of the local community. These projects are designed to encourage faculty members to share their research and creativity, benefiting education, research, and societal development in the region.







# Partnerships for the Goals

Strengthen the means of implementation and revitalize the Global Partnership for Sustainable Development

สร้างพลังแห่งการเป็นหุ้นส่วนความร่วมมือระดับสากลต่อการพัฒนาที่ยั่งยืน

## Sustainable Initiatives in the Faculty of Arts

Silpakorn University has organized a research and creative works symposium titled “Samut Songkhram Study: The City of Wisdom, Culture, and Economy.” This event took place on July 1, 2026, and aimed to showcase the research and creative works of the faculty’s staff both in physical and online formats.

The symposium was designed to promote knowledge sharing among the faculty members and to allow them to share their experiences in research and creativity. Additionally, it was a stepping stone for further development and expansion of community service in various regions. The faculty invited project professors and researchers to share their knowledge and experiences during the symposium. This initiative is part of the faculty’s commitment to continue extending its community services in the future.



## Youth Leaders for Localizing SDGs

Silpakorn University actively participated in the sustainability driven project, which took place on April 22-23, 2026, at Thammasat University's Rangsit Center. This initiative is a vital part of the Thai Ministry of Higher Education, Science, Research, and Innovation's policy to reform Thai higher education, aiming to equip university leaders and students with the capacity to drive sustainable development at the local level. Silpakorn University was represented alongside students from nine different universities. The project has received support from the Reinventing University Committee under the Ministry of Higher Education, Science, Research, and Innovation. This collaborative effort aims to empower the next generation of educational leaders and encourage further work with students from other universities within their institutions, promoting the principles of sustainable development.

มหาวิทยาลัยศิลปากรร่วมกับกระทรวงศึกษาธิการและสำนักงานคณะกรรมการการอุดมศึกษา เพื่อขับเคลื่อนเป้าหมายการพัฒนาที่ยั่งยืน ภายใต้การสนับสนุนของกระทรวงการอุดมศึกษา 5 ปีฯ วิทยาศาสตร์ และนวัตกรรม โดยเป็นส่วนหนึ่งของงานนโยบายการปฏิรูปอุดมศึกษาไทย Reinventing University

**ขอเชิญชวนนักศึกษาจากมหาวิทยาลัยศิลปากรทุกชั้นปี เข้าร่วมกิจกรรมการสร้างเครือข่ายผู้นำนักศึกษา และพัฒนาศักยภาพในการขับเคลื่อนความยั่งยืนระดับพื้นที่ (Youth Leaders for Localizing SDGs)**

วัน/เวลา	หัวข้อ
ครั้งที่ 1 วันที่ 3 เมษายน 2566 เวลา 16.00 น. - 19.00 น. (3ชม.)	SDG 101 / บทบาทเยาวชนในการพัฒนาที่ยั่งยืน (ตัวอย่าง Best Practice) รูปแบบ Online Training
ครั้งที่ 2 วันที่ 4 เมษายน 2566 เวลา 16.00 น. - 19.00 น. (3ชม.)	เรื่องป็นในการพัฒนาโครงการขับเคลื่อน SDG รูปแบบ Online Training
ครั้งที่ 3 วันที่ 5 เมษายน 2566 เวลา 16.00 - 19.00 น. (3ชม.)	นำเสนอ Project Concept รูปแบบ Online Training
ครั้งที่ 4 วันที่ 22-23 เมษายน 2566 (2 วัน)	นำเสนอ Project Concept รูปแบบ Onsite Training ณ มหาวิทยาลัยธรรมศาสตร์ ศูนย์รังสิต

ผู้สมัครเข้าร่วมต้องเข้าร่วมตลอดครบไปแรมที่ที่กำหนด  
เปิดรับสมัครตั้งแต่วันที่ - วันที่ 23 กุมภาพันธ์ 2566  
รับชิวในกิจกรรมนักศึกษา 15 ชม. (SDU)

สนใจลงทะเบียนได้ที่  
QR Code  
<https://forms.gle/9t3kxw00j2m8t411>

\*รับสมัครผู้เข้าร่วม 10 คน เท่านั้น!  
ฟรี! ค่าใช้จ่ายตลอดกิจกรรม

สอบถามรายละเอียดเพิ่มเติมได้ที่ 092-4310868















Silpakorn University

Contact Information :

6 Ratchamankha Nai Road, Mueang District,  
Nakhon Pathom Province 73000

Email : [sdgmove.su@gmail.com](mailto:sdgmove.su@gmail.com)

